

TAYLOR

Entrance Systems™

AMERICA'S DOORMAKER



We are **America's doormaker**

taylordoor.com

MICHIGAN MADE SINCE 1946



DOORS BUILT WITH **PASSION & PRIDE**

BEAUTY, QUALITY, AND VALUE ARE ON DISPLAY
IN EVERY PRODUCT TAYLOR MAKES.

- 4 Project Types
- 6 Steel Entrance Doors
- 16 Fiberglass Entrance Doors
- 22 Technical Data & Certifications
- 24 Hurricane and Windload Approvals
- 26 Custom Capabilities
- 28 Pre-Hung Offering
- 30 Ordering Your Door

THE TAYLOR ADVANTAGE

QUALITY DOORS BUILT TO YOUR SPECIFICATIONS



1 SELECTION

- Wood-edge
- Steel-edge
- Fiberglass
- More styles to choose from

2 COMPLIANCE

- Fire doors to 90 minutes
- Texas Dept. of Insurance (TDI)
- ENERGY STAR
- Florida FBC
- ADA
- STC
- NFRC

3 CAPABILITY

- Custom width and heights
- Special face and edge preps
- Hinge and bore locations to your specs
- Slabs or pre-hung
- Steel or wood frame

4 AVAILABILITY

- No minimums
- Stock sizes and profiles ship in 10 days or less
- Additional sizes and profiles available (*with extended lead time*)

PROJECT TYPES

At Taylor Entrance Systems™, we use only top-quality materials to help bring your vision to life. We have a wide range of styles and textures to meet your architectural style or design needs. Taylor offers the perfect door solutions for multi-family and light commercial projects. We can provide you what you need, when you need it.





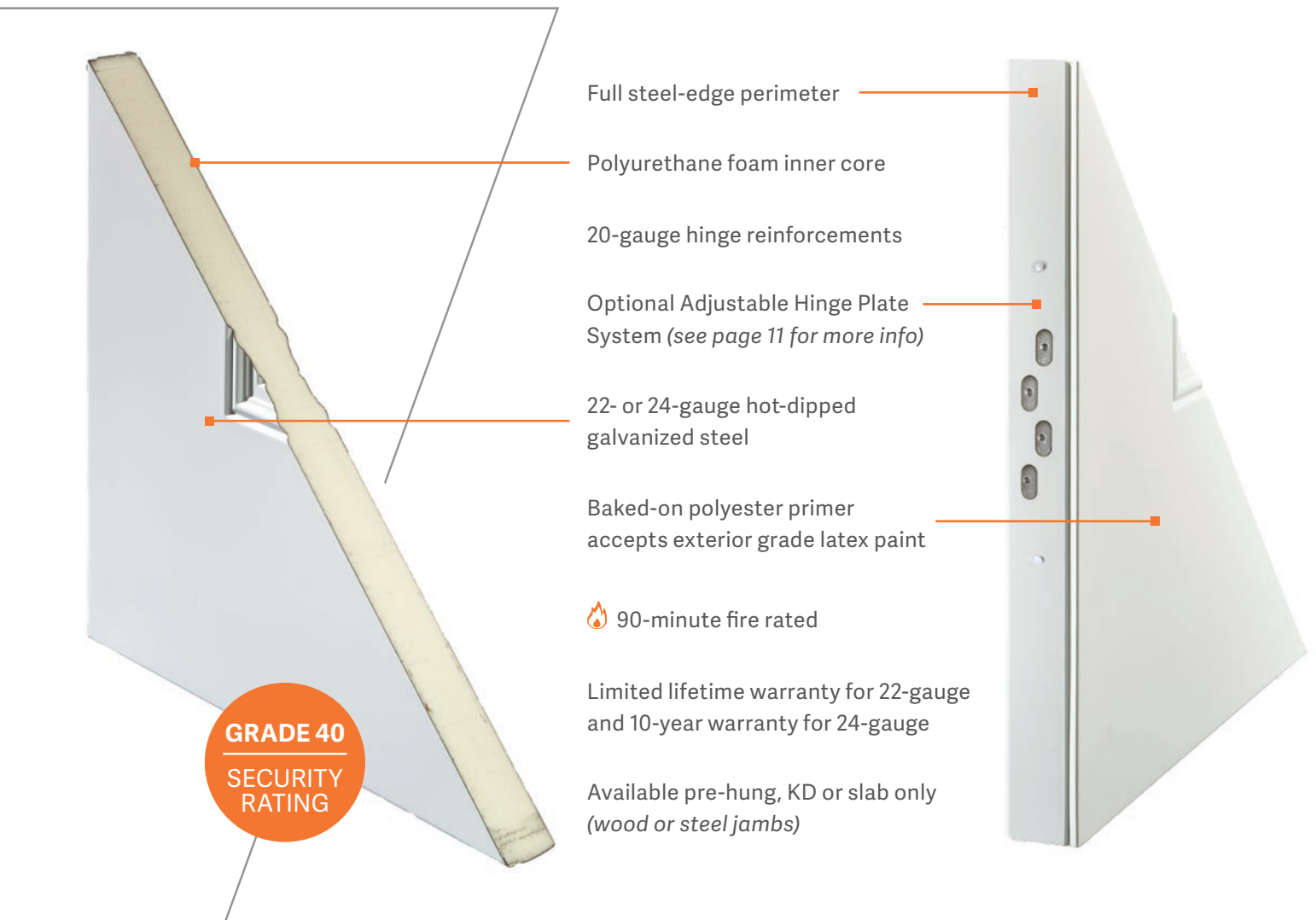
Let **TAYLOR ENTRANCE SYSTEMS™**
be a part of your next project

- ✓ Office Buildings
 - ✓ Hotel and Hospitality
 - ✓ Multi-family
 - ✓ Student Housing
 - ✓ Assisted Living
 - ✓ Hospitals and Clinics
 - ✓ Places of Worship
 - ✓ Financial Institutions
 - ✓ Warehouses
 - ✓ Manufacturing Facilities
- and more...

CAMBRIDGE COLLECTION

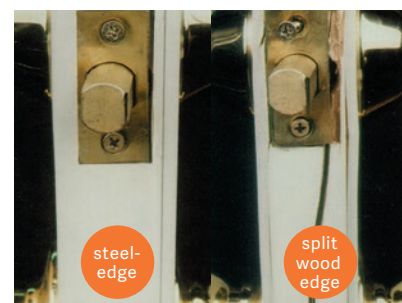
SMOOTH STEEL

Smooth steel doors are designed for strength, security and durability. This premium, insulated door system is constructed with a steel-edge perimeter and resists cracking, splitting, warping, twisting or rotting.



THE STEEL-EDGE ADVANTAGE

Taylor's steel-edge doors receive the highest rating possible in the industry's toughest forced entry test. A steel-edge door must withstand the force beyond 7 hits from a 100 pound test weight to achieve a Grade 40 rating.





3/0 WIDE	1-PANEL FLAT SHAKER	2-PANEL FLAT SHAKER	3-PANEL FLAT SHAKER	3-PANEL CONTEMPORARY	4-PANEL SHAKER	5-PANEL
6/8 height	X	X	X	X	X	X
7/0 height	X	X	X			X
8/0 height						
10" ADA rail available	X	X	X			X



3/0 WIDE	1-PANEL HD	2-PANEL HD	2-PANEL HD ARCH TOP	2-PANEL HD ARCH TOP PLANK	2-PANEL HD COTTAGE	3/4 2-PANEL HD
6/8 height	X	X	X	X	X	X
7/0 height	X	X	X	X	X	X
8/0 height		X				
10" ADA rail available	X	X	X	X	X	X



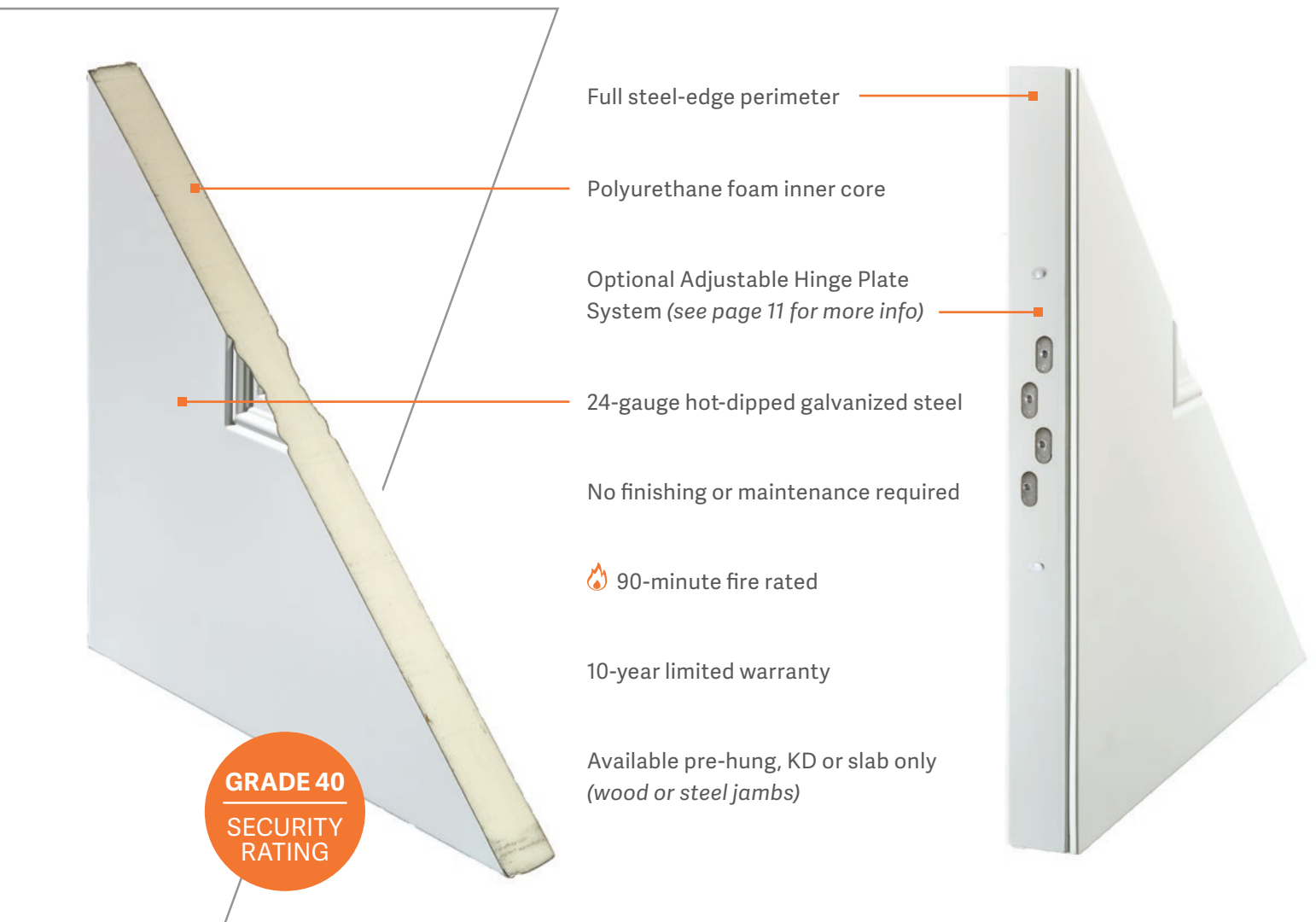
3/0 WIDE	3-PANEL HD CRAFTSMAN	TRUE 4-PANEL	6-PANEL HD	FLUSH 5-GROOVE	FLUSH 4-GROOVE	FLUSH 4-GROOVE CONTEMPORARY
6/8 height	X	X	X	X	X	X
7/0 height	X	X	X			
8/0 height				X (standard def only)		
10" ADA rail available	X	X	X			

NOTE: Also available in Flush. Other door styles available by request. HD= High Definition ★ Doors are available with 22-gauge steel only.

TRUKOTE COLLECTION

PRE-FINISHED STEEL

TruKote is a pre-finished, insulated steel door that is designed for strength, security and durability. No painting or staining is needed. This door is ready to install and provides years of beauty with its durable white finish.



Full steel-edge perimeter

Polyurethane foam inner core

Optional Adjustable Hinge Plate System (see page 11 for more info)

24-gauge hot-dipped galvanized steel

No finishing or maintenance required

 90-minute fire rated

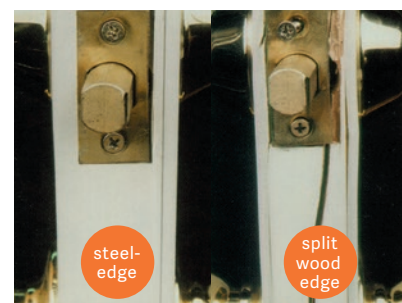
10-year limited warranty

Available pre-hung, KD or slab only
(wood or steel jambs)

GRADE 40
SECURITY
RATING

THE STEEL-EDGE ADVANTAGE

Taylor's steel-edge doors receive the highest rating possible in the industry's toughest forced entry test. A steel-edge door must withstand the force beyond 7 hits from a 100 pound test weight to achieve a Grade 40 rating.





3/0 WIDE	FLUSH	1-PANEL HD	2-PANEL HD	2-PANEL HD ARCH TOP
6/8 height	x	x	x	x
7/0 height	x	x	x	x
8/0 height	x		x	
10" ADA rail available	x	x	x	x



3/0 WIDE	3-PANEL CRAFTSMAN	6-PANEL HD
6/8 height	x	x
7/0 height	x	x
8/0 height		X (standard def only)
10" ADA rail available		x

**LOOKS NEW
FOR YEARS
TO COME**

Trukote doors are factory finished with white polyester paint. This pre-finish requires no additional finishing to maintain its bright white color.

TRUGRAIN™ COLLECTION

POLYESTER COATED STEEL

Trugrain is a ready to install, insulated steel door that combines the look of wood with the strength of steel. The polyester coating is extremely durable, creates a realistic wood grain appearance, and provides low maintenance benefits.



Full steel-edge perimeter

Polyurethane foam inner core

Optional Adjustable Hinge Plate System *(see page 11 for more info)*

22-gauge hot-dipped galvanized steel with polyester coating

No finishing or maintenance required

🔥 90-minute fire rated

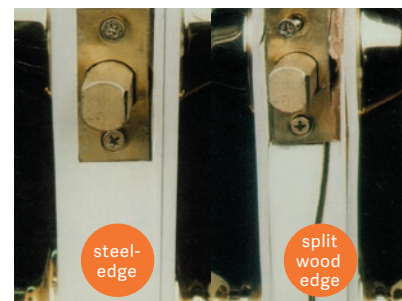
10-year limited warranty

Available pre-hung, KD or slab only

GRADE 40
SECURITY
RATING

THE STEEL-EDGE ADVANTAGE

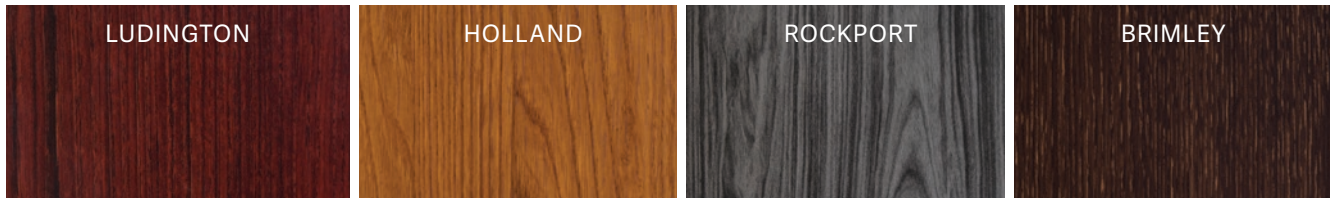
Taylor's steel-edge doors receive the highest rating possible in the industry's toughest forced entry test. A steel-edge door must withstand the force beyond 7 hits from a 100 pound test weight to achieve a Grade 40 rating.





3/0 WIDE	FLUSH	1-PANEL SHAKER	2-PANEL HD	3-PANEL CRAFTSMAN	6-PANEL HD
6/8 height	x	x	x	x	x
7/0 height	x	x	x	x	x
8/0 height	x		x		x
10" ADA rail available	x		x		x

TRUGRAIN™ COLOR OPTIONS



INNOVATION
is in the details

Not every opening is perfect, and even the best constructions shift and settle over time. That's why we created the Adjustable Hinge Plate System. This one-of-a-kind plate is built into our slab, allowing the door to be easily adjusted in any direction without removing it from the frame. Adjustments can be made with a screwdriver at any time.



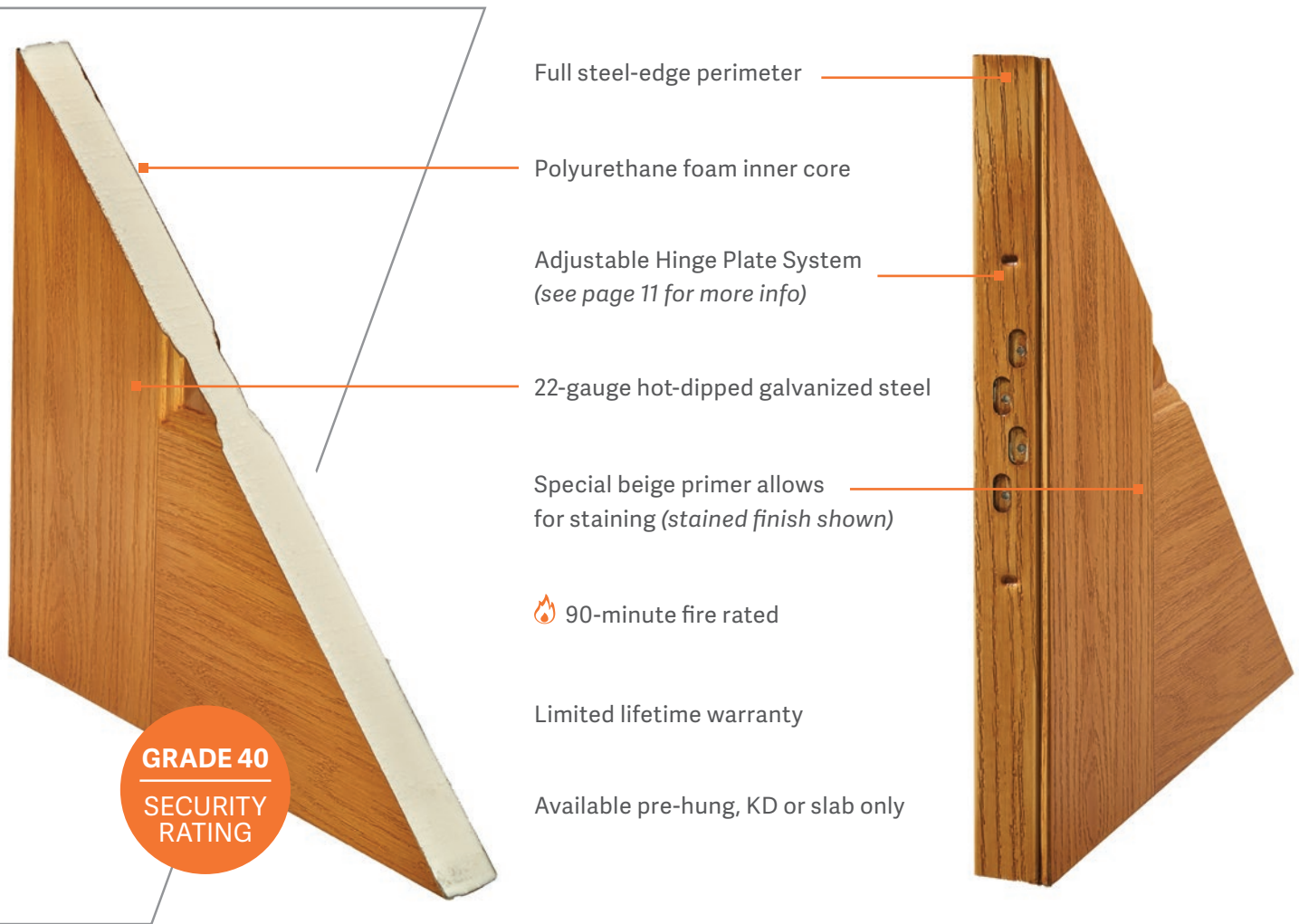
Adjustments can be made up to 3/8" up or down and 1/4" left or right to achieve a tight weather seal.



NORWOOD COLLECTION

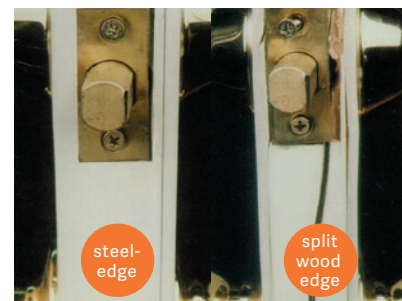
TEXTURED STAINABLE STEEL

Stainable steel entrance doors provide the beauty of wood with the features and benefits of steel. The doors are constructed with a deeply embossed Oak wood grain surface that is enhanced through the staining process.



THE STEEL-EDGE ADVANTAGE

Taylor's steel-edge doors receive the highest rating possible in the industry's toughest forced entry test. A steel-edge door must withstand the force beyond 7 hits from a 100 pound test weight to achieve a Grade 40 rating.





3/0 WIDE	FLUSH	1-PANEL HD	2-PANEL HD	2-PANEL HD ARCH TOP	2-PANEL HD ARCH TOP PLANK	3-PANEL HD CRAFTSMAN
6/8 height	x	x	x	x	x	x
7/0 height	x	x	x	x	x	x
8/0 height	x		x			
10" ADA rail available	x	x	x	x	x	x



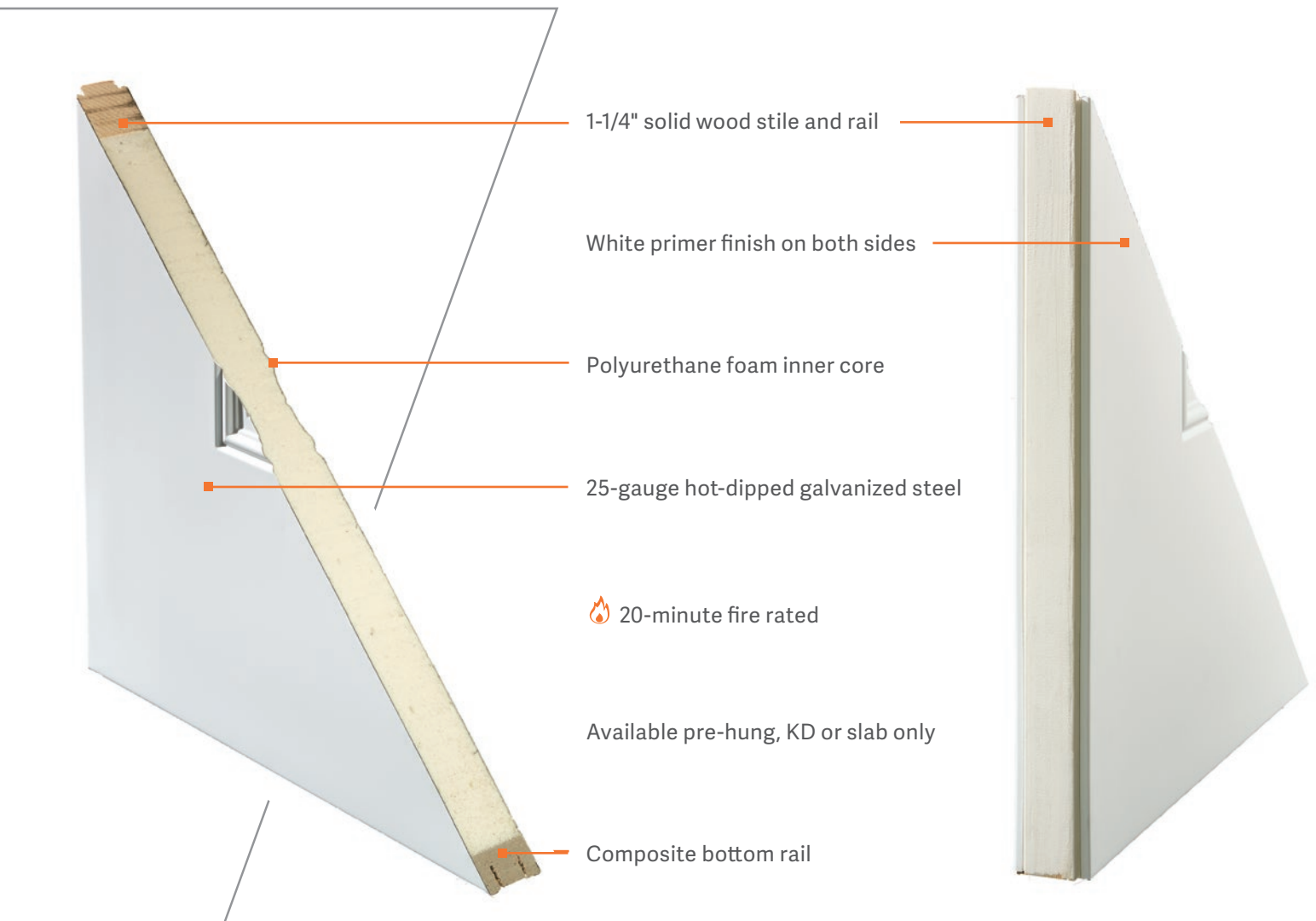
3/0 WIDE	3-PANEL HD	TRUE 4-PANEL	6-PANEL	8-PANEL	9-PANEL	2-PANEL HD COTTAGE
6/8 height	x	x	x	x	x	x
7/0 height	x	x	x	x	x	x
8/0 height			x			
10" ADA rail available	x	x	x	x	x	x

NOTE: Other door styles available by request. HD= High Definition ★ Available with optional dentil shelf. # Architecturally correct graining (6/8 height only).

EDGEWOOD® COLLECTION

WOOD-EDGE STEEL

Edgewood® is a steel entrance door system that features a wood stile and rail system, along with a composite bottom rail that guards against both rot and insects.





3/0 WIDE	FLUSH	2-PANEL HD	TRUE 4-PANEL	6-PANEL HD
6/8 height	X	X	X	X
7/0 height				
8/0 height				
10" ADA rail available	X			X

OPEN WIDER with 4 foot wide doors

Wider openings allow for small equipment, motorcycles, lawn mowers and other large items to pass through without requiring an overhead or double door.

The 4/0 wide by 6/8 high, 22-gauge steel door, is ideal for agricultural buildings, yard barns, garage service entrances and ADA applications.

The 4/0 wide door is not available with a 20-minute fire rating.



TIMBERLINE COLLECTION

SMOOTH OR TEXTURED FIBERGLASS

Timberline fiberglass doors are designed with energy and thermal performance in mind, while providing depth and dimension to your entryway.

Timberline textured doors are dressed in rich Oak grain texture, while Timberline smooth doors are contemporary in style.



Unaffected by moisture and humidity

Full-length composite stiles and rails with HydroShield provide a 6-sided protection against water infiltration, mold, and insects

Polyurethane foam inner core

High-impact fiberglass reinforced skins

Surfaces are easy to stain, paint and clean

 20-minute fire rated

25-year limited warranty on Timberline Smooth, limited lifetime warranty on Timberline Textured

Available pre-hung, KD or slab only





3/0 WIDE	FLUSH	3/4 OVAL PREMIUM	4-PANEL BLANK TOP	TRUE 4-PANEL	3/4 4-PANEL
6/8 height	x	x	x	x	x
8/0 height	x				
10" ADA rail available	x				
Surface	Textured or Smooth	Textured or Smooth	Textured or Smooth	Textured or Smooth	Textured or Smooth



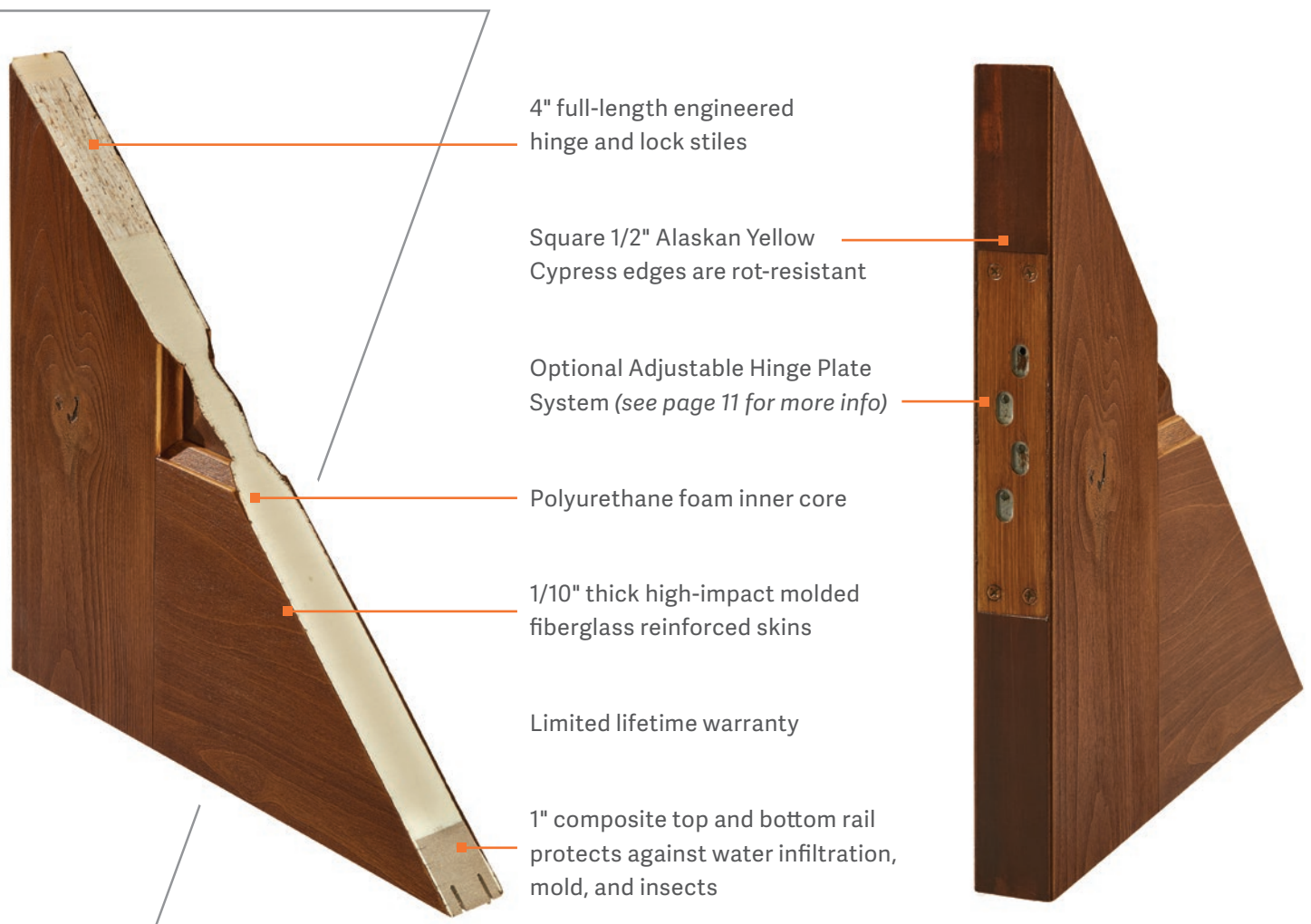
3/0 WIDE	6-PANEL	6-PANEL CRAFTSMAN	9-PANEL	2-PANEL	3-PANEL CRAFTSMAN
6/8 height	x	x	x	x	x
8/0 height	x				
10" ADA rail available					
Surface	Textured or Smooth	Textured or Smooth	Textured or Smooth	Smooth Only	Smooth Only

NOTE: Other door styles available by request.

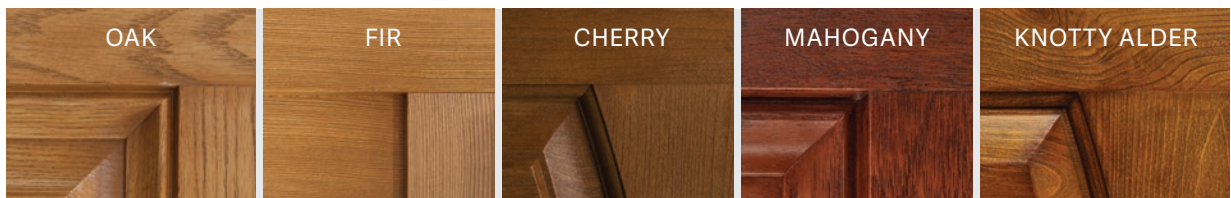
TIMBERGRAIN COLLECTION

TEXTURED FIBERGLASS

Timbergrain fiberglass entrance doors are constructed of high resolution, grained, fiberglass skins. They offer the warmth of wood and its natural variation of grain characteristics in Cherry, Mahogany, Fir, Oak, and Knotty Alder.



WOOD GRAIN OPTIONS





3/0 WIDE	FLUSH	3/4 2-PANEL SQUARE TOP	3/4 2-PANEL SQUARE TOP PLANK	3/4 2-PANEL ARCH TOP	3/4 2-PANEL ARCH TOP PLANK	3-PANEL
6/8 height	X	X	X	X	X	X
7/0 height	X	X	X	X	X	X
8/0 height	X	X - CHERRY		X	X	
10" ADA rail available	X	X	X	X	X	X
Wood grain	C	C, O	C, O	C	C	C, O, M



3/0 WIDE	2-PANEL ARCH TOP	2-PANEL ARCH TOP PLANK	6-PANEL	3-PANEL CRAFTSMAN	1-PANEL	8-PANEL CENTER ARCH
6/8 height	X	X	X	X	X	X
7/0 height	X	X	X	X	X	X
8/0 height	X	X		X	X	
10" ADA rail available	X	X	X	X	X	X
Wood grain	K	K	C, O, M	F	F	C, O



3/6 WIDE	2-PANEL SQUARE TOP	2-PANEL SQUARE TOP 3-PLANK	2-PANEL SQUARE TOP 5-PLANK
8/0 height	X	X	X
Wood grain	C	C	C

C = Cherry Grain
 F = Fir Grain
 M = Mahogany Grain
 O = Oak Grain
 K = Knotty Alder Grain

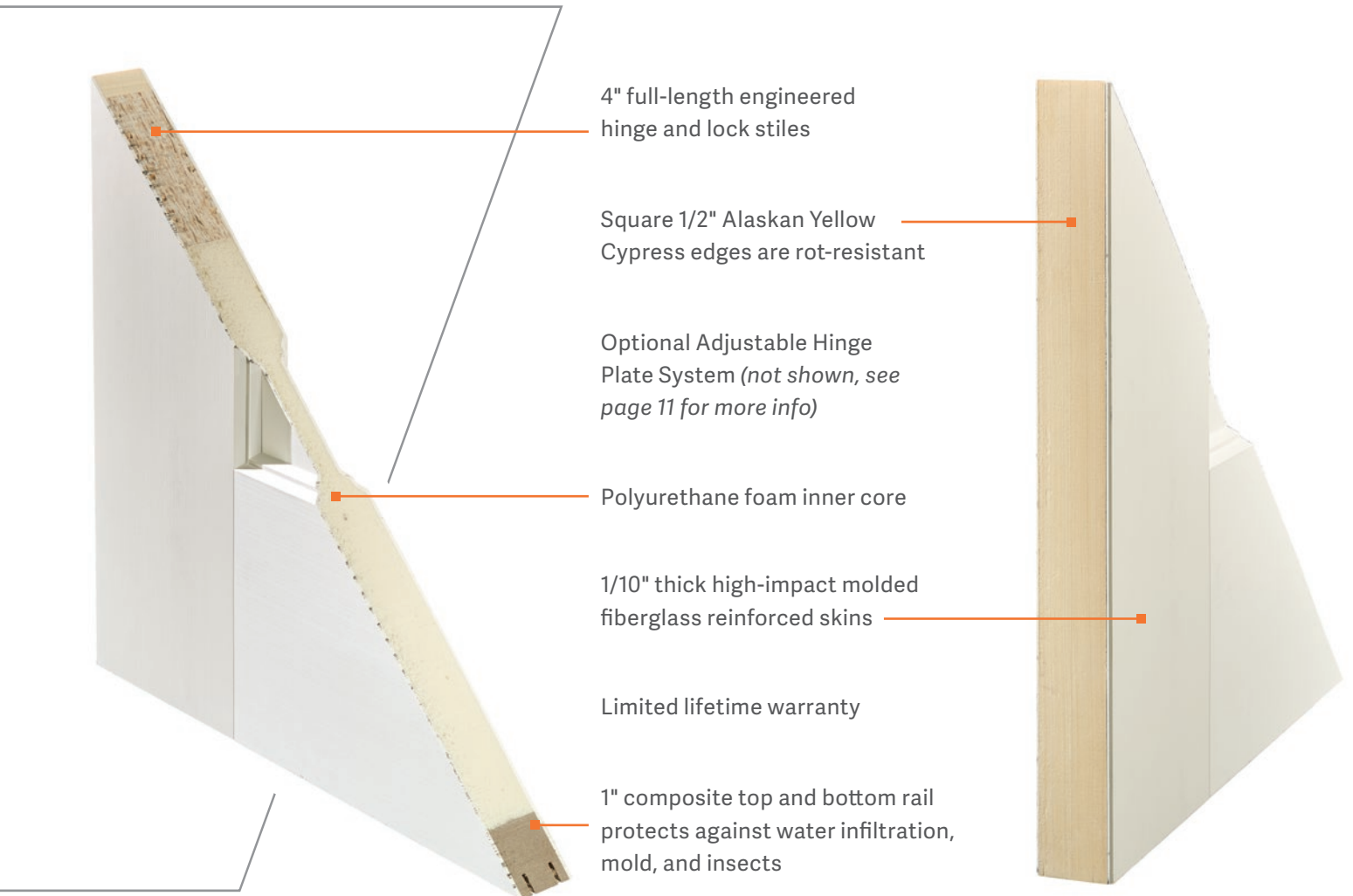
NOTE: Timbergrain fiberglass door skins and images provided by MasterGrain™.



NOVUS COLLECTION

SMOOTH FIBERGLASS

Combine the finest in function and style with a Novus smooth fiberglass entrance door. This collection is simple and stylish, with clean lines and minimal detail, to create a modern level of elegance to your entrance.





3/0 WIDE	FLUSH	3/4 2-PANEL MODERN	3-PANEL MODERN	3-PANEL CRAFTSMAN SHAKER
6/8 height	x	x	x	x
7/0 height	x	x	x	x
8/0 height	x	x		x
10" ADA rail available	x	x	x	x



The modern, crisp edge embossments add the right amount of detail.



MODERN DESIGN // maximum protection

Fiberglass doors are engineered for durability and longevity, and provide maximum protection to your entryway.



TECHNICAL TOOLS

From technical data to installation instructions, Taylor Entrance Systems™ has the tools you will need to specify exterior doors for your light commercial projects.

- Download high quality design files from CADdetails.com for our steel and fiberglass entrance door systems.
- View products approved by HVHZ in our website's Technical Library, or from the Florida Building Code website
- Our website's Technical Library contains fire ratings, STC and OITC ratings, along with Impact and Design Pressure information.
- Our products meet the requirements for ENERGY STAR, coastal codes and industry security tests.

taylor-door.com

SOUND TRANSMISSION CLASS (STC) RATING

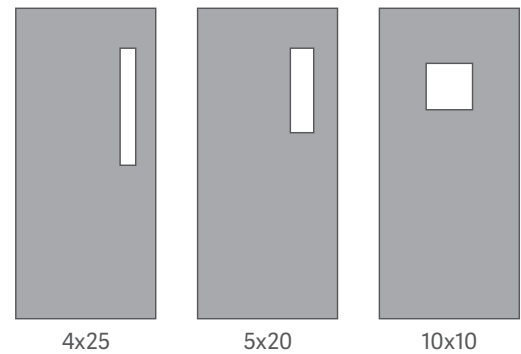
Product	Rating
22-gauge steel-edge Steel Door	STC 25
24-gauge steel-edge Steel Door	STC 22
Edgewood® Steel Door	STC 24
Timbergrain Fiberglass Door	STC 25

FIRE RATINGS

Product	Rating
Edgewood® Wood-Edge Steel Collection	20 minute
Cambridge Smooth Steel Collection	20 or 90 minute
TruKote Steel Collection	20 or 90 minute
Trugrain™ Steel Collection	20 or 90 minute
Norwood Stainable Steel Collection	20 or 90 minute
Timberline Fiberglass Collection	20 minute available
Novus Smooth Fiberglass Collection	not rated
Timbergrain Fiberglass Collection	not rated



FIRE GLASS



NOTE: Other styles available by request.

TEXAS HURRICANE & WINDLOAD APPROVALS

Texas Department of Insurance (TDI) approvals

Product	Description	TDI Approval Numbers
Impact	6/8 and 8/0 Glazed Steel Entry Doors, Inswing and Outswing, Singles and Doubles, with and without Sidelights	DR-737, TX4504, TX4505, TX4506, TX4507
Impact	7/0 Opaque Steel Entry Doors with IDP Adjustable Steel Door Frame, Inswing and Outswing, Singles	DR-740, TX4503
Impact	7/0 Opaque Steel Entry Doors with Dunbarton Adjustable Steel Door Frame, Inswing and Outswing	DR-964, TX4784
Impact	6/8 Opaque Wood Edge Steel Side Hinge Doors, Outswing and Inswing, Singles	DR-993, TX4862
Non-Impact	6/8 and 8/0 Glazed Steel Entry Doors, Inswing and Outswing, Singles and Doubles, with and without Sidelights	DR-734, TX4496, TX4497, TX4498, TX4495
Non-Impact	6/8 and 8/0 Opaque Steel Entry Doors, Inswing and Outswing, Singles and Doubles, with and without Sidelights	DR-739, TX4499, TX4500, TX4501, TX4502
Timbergrain Impact	6/8 and 8/0 Single Opaque Fiberglass Entry Doors, Inswing and Outswing	DR-606, TX4512, TX4513
Timbergrain Non-Impact	6/8 and 8/0 Glazed Fiberglass Entry Doors, Inswing, Singles & Doubles, with and without Sidelights	DR-619, TX4518, TX4259, TX4260, TX4261

HURRICANE & WINDLOAD APPROVALS

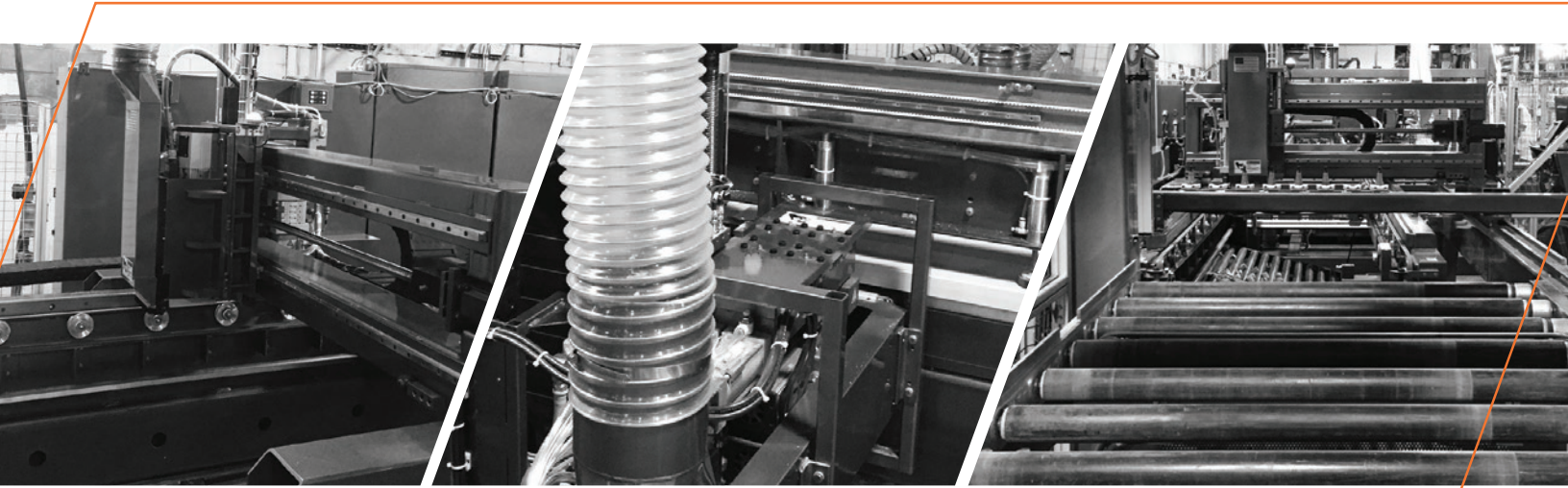
Taylor Entrance Systems™ has numerous options available to meet your Hurricane and Windload requirements. We manufacture products that are approved for sale in both the HVHZ (High Velocity Hurricane Zone) and non-HVHZ areas of Florida. A more detailed summary of the approvals are available from our website's Technical Library.

The full approvals and details can be downloaded from the Florida Building Code (FBC) website at floridabuilding.org. To access these documents, search under the product approval section.

Florida Approval Number	Model, Number, or Name	Description	Approved for use in HVHZ	Approved for use outside HVHZ	Impact Resistant
FL-8845.1	Steel Edge Door - Glazed	Outswing or Inswing Insulated "Impact" Glazed Steel Edge Door - Single (X) Configuration up to 6/8 in Height	X	X	X
FL-8845.2	Steel Edge Door - Glazed	Outswing or Inswing Insulated "Impact" Glazed Steel Edge Door - Single with Sidelite (XO or OX) Configuration up to 6/8 in Height	X	X	X
FL-8845.3	Steel Edge Door - Glazed	Outswing or Inswing Insulated "Impact" Glazed Steel Edge Door - Single with Sidelites (OXO) Configuration up to 6/8 in Height	X	X	X
FL-8845.4	Steel Edge Door - Glazed	Outswing or Inswing Insulated "Impact" Glazed Steel Edge Door - Double (XX) Configuration up to 6/8 in Height	X	X	X
FL-8845.5	Steel Edge Door - Glazed	Outswing or Inswing Insulated "Impact" Glazed Steel Edge Door - Double with Sidelites (OXXO) Configuration up to 6/8 in Height	X	X	X
FL-8845.6	Steel Edge Door - Glazed	Outswing or Inswing Insulated "Impact" Glazed Steel Edge Door - Single (X) Configuration up to 8/0 in Height	X	X	X
FL-8845.7	Steel Edge Door - Glazed	Outswing or Inswing Insulated "Impact" Glazed Steel Edge Door - Single with Sidelite (XO or OX) Configuration up to 8/0 in Height	X	X	X
FL-8845.8	Steel Edge Door - Glazed	Outswing or Inswing Insulated "Impact" Glazed Steel Edge Door - Single with Sidelites (OXO) Configuration up to 8/0 in Height	X	X	X
FL-8845.9	Steel Edge Door - Glazed	Outswing or Inswing Insulated "Impact" Glazed Steel Edge Door - Double (XX) Configuration up to 8/0 in Height	X	X	X
FL-8845.10	Steel Edge Door - Glazed	Outswing or Inswing Insulated "Impact" Glazed Steel Edge Door - Double with Sidelites (OXXO) Configuration up to 8/0 in Height	X	X	X
FL-8845.11	Steel Edge Door - Opaque	Outswing or Inswing Insulated "Impact" Opaque Steel Edge Door - Single (X) Configuration up to 6/8 in Height	X	X	X
FL-8845.12	Steel Edge Door - Opaque	Outswing or Inswing Insulated "Impact" Opaque Steel Edge Door - Single with Sidelite (XO or OX) Configuration up to 6/8 in Height	X	X	X
FL-8845.13	Steel Edge Door - Opaque	Outswing or Inswing Insulated "Impact" Opaque Steel Edge Door - Single with Sidelites (OXO) Configuration up to 6/8 in Height	X	X	X
FL-8845.14	Steel Edge Door - Opaque	Outswing or Inswing Insulated "Impact" Opaque Steel Edge Door - Double (XX) Configuration up to 6/8 in Height	X	X	X
FL-8845.15	Steel Edge Door - Opaque	Outswing or Inswing Insulated "Impact" Opaque Steel Edge Door - Double with Sidelites (OXXO) Configuration up to 6/8 in Height	X	X	X
FL-8845.16	Steel Edge Door - Opaque	Outswing or Inswing Insulated "Impact" Opaque Steel Edge Door - Single (X) Configuration up to 8/0 in Height	X	X	X
FL-8845.17	Steel Edge Door - Opaque	Outswing or Inswing Insulated "Impact" Opaque Steel Edge Door - Single with Sidelite (XO or OX) Configuration up to 8/0 in Height	X	X	X
FL-8845.18	Steel Edge Door - Opaque	Outswing or Inswing Insulated "Impact" Opaque Steel Edge Door - Single with Sidelites (OXO) Configuration up to 8/0 in Height	X	X	X
FL-8845.19	Steel Edge Door - Opaque	Outswing or Inswing Insulated "Impact" Opaque Steel Edge Door - Double (XX) Configuration up to 8/0 in Height	X	X	X
FL-8845.20	Steel Edge Door - Opaque	Outswing or Inswing Insulated "Impact" Opaque Steel Edge Door - Double with Sidelites (OXXO) Configuration up to 8/0 in Height	X	X	X
FL-9542.1	Steel Edge Door - Glazed	6/8 "Non-Impact" Glazed Steel Edge Single Insulated Steel Door - Outswing / Inswing (X) Configuration		X	
FL-9542.2	Steel Edge Door - Glazed	6/8 "Non-Impact" Glazed Steel Edge Single Insulated Steel Door with or without "Non-Impact" Sidelite or Sidelites - Outswing / Inswing (OX or XO; OXO) Configurations		X	
FL-9542.3	Steel Edge Door - Glazed	6/8 "Non-Impact" Glazed Steel Edge Double Insulated Steel Door with or without "Non-Impact" Sidelites - Outswing / Inswing (XX; OXXO) Configurations		X	
FL-9542.4	Steel Edge Door - Glazed	8/0 "Non-Impact" Glazed Steel Edge Single Insulated Steel Door - Outswing / Inswing (X) Configuration		X	

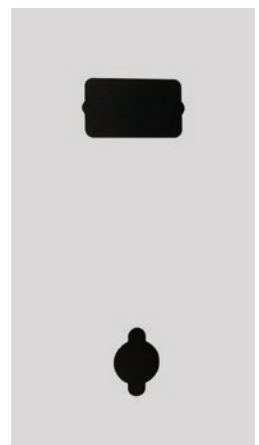
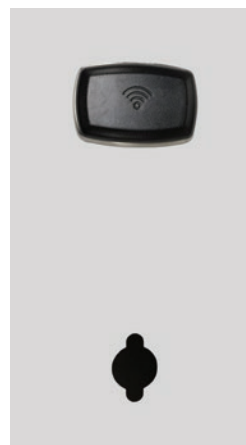
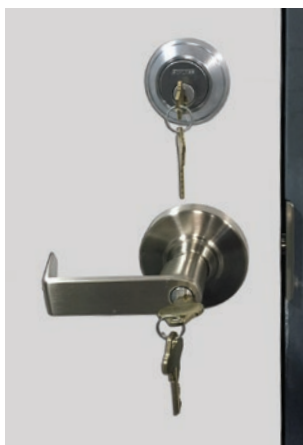
Florida Approval Number	Model, Number, or Name	Description	Approved for use in HVHZ	Approved for use outside HVHZ	Impact Resistant
FL-9542.5	Steel Edge Door - Glazed	8/0 "Non-Impact" Glazed Steel Edge Single Insulated Steel Door with or without "Non-Impact" Sidelite or Sidelites - Outswing / Inswing (OX or XO; OXO) Configurations		X	
FL-9542.6	Steel Edge Door - Glazed	8/0 "Non-Impact" Glazed Steel Edge Double Insulated Steel Door with or without "Non-Impact" Sidelites - Outswing / Inswing (XX; OXXO) Configurations		X	
FL-14513.1	Steel Edge Door - Opaque	Up to a Nominal 3/6 x 7/0 Opaque Steel Edge Steel Door in a Two Piece Steel Frame System (K2A Series Steel frame). Inswing / Outswing Configuration (X)	X	X	X
FL-14513.2	Steel Edge Door - Opaque	Up to a Nominal 3/6 x 7/0 Opaque Steel Edge Steel Door in a Fixed Steel Frame System (F Series Steel frame). Inswing / Outswing Configuration (X)	X	X	X
FL-14513.3	Steel Edge Door - Opaque	Up to a Nominal 3/6 x 7/0 Opaque Steel Edge Steel Door in a Two Piece Steel Frame System (Rediflex Steel frame). Inswing / Outswing Configuration (X)		X	X
FL-15135.1	Wood Edge Door - Glazed	Insulated Glazed Wood Edge Steel Door - Single (X) Outswing/Inswing Configurations up to 6/8 in Height		X	
FL-15135.2	Wood Edge Door - Glazed	Insulated Glazed Wood Edge Steel Door - Single with or without Sidelites (OX or XO, OXO) Outswing/Inswing Configurations up to 6/8 in Height		X	
FL-15135.3	Wood Edge Door - Glazed	Insulated Glazed Wood Edge Steel Door - Double with or without Sidelites (XX, OXXO) Outswing/Inswing Configurations up to 6/8 in Height		X	
FL-15135.4	Wood Edge Door - Glazed	Insulated "Impact" Glazed Wood Edge Steel Door - Single (X) Outswing/Inswing Configurations up to 6/8 in Height		X	X
FL-15135.5	Wood Edge Door - Glazed	Insulated "Impact" Glazed Wood Edge Steel Door - Single with or without Sidelites (OX or XO, OXO) Outswing/Inswing Configurations up to 6/8 in Height		X	X
FL-15135.6	Wood Edge Door - Glazed	Insulated "Impact" Glazed Wood Edge Steel Door - Double with or without Sidelites (XX, OXXO) Outswing/Inswing Configurations up to 6/8 in Height		X	X
FL-15135.7	Wood Edge Door - Glazed	Insulated "Impact" Opaque Wood Edge Steel Door - Single (X) Outswing/Inswing Configurations up to 6/8 in Height		X	X
FL-15135.8	Wood Edge Door - Glazed	Insulated "Impact" Opaque Wood Edge Steel Door - Single with or without Sidelites (OX or XO, OXO) Outswing/Inswing Configurations up to 6/8 in Height (Utilizes Taylor "Impact" Sidelites)		X	X
FL-15135.9	Wood Edge Door - Glazed	Insulated "Impact" Opaque Wood Edge Steel Door - Double with or without Sidelites (XX, OXXO) Outswing/Inswing Configurations up to 6/8 in Height (Utilizes Taylor "Impact" Sidelites)		X	X
FL-15135.10	Wood Edge Door - Glazed	Insulated "Impact" Opaque Wood Edge Steel Door - Single with or without Sidelites (OX or XO, OXO) Outswing/Inswing Configurations up to 6/8 in Height (Utilizes ODL "Impact" Sidelites)		X	X
FL-15135.11	Wood Edge Door - Glazed	Insulated "Impact" Opaque Wood Edge Steel Door - Double with Sidelites (OXXO) Outswing/Inswing Configurations up to 6/8 in Height (Utilizes ODL "Impact" Sidelites)		X	X
FL-15135.12	Wood Edge Door - Glazed	Insulated "Impact" Opaque Wood Edge Steel Door - Single (X) Outswing/Inswing Configurations up to 8/0 in Height		X	X
FL-15135.13	Wood Edge Door - Glazed	Insulated "Impact" Opaque Wood Edge Steel Door - Single with or without Sidelites (OX or XO, OXO) Outswing/Inswing Configurations up to 8/0 in Height (Utilizes Taylor "Impact" Sidelites)		X	X
FL-15135.14	Wood Edge Door - Glazed	Insulated "Impact" Opaque Wood Edge Steel Door - Double with or without Sidelites (XX, OXXO) Outswing/Inswing Configurations up to 8/0 in Height (Utilizes Taylor "Impact" Sidelites)		X	X
FL-15135.15	Wood Edge Door - Glazed	Insulated "Impact" Opaque Wood Edge Steel Door - Single with or without Sidelites (OX or XO, OXO) Outswing/Inswing Configurations up to 8/0 in Height (Utilizes ODL "Impact" Sidelites)		X	X
FL-15135.16	Wood Edge Door - Glazed	Insulated "Impact" Opaque Wood Edge Steel Door - Double with Sidelites (OXXO) Outswing/Inswing Configurations up to 8/0 in Height (Utilizes ODL "Impact" Sidelites)		X	X
FL-15931.1	Timbergrain	Up to a 3/0 x 6/8 Opaque Fiberglass Door (X Configuration) Inswing/Outswing		X	X
FL-15931.2	Timbergrain	Up to a 3/0 x 6/8 Opaque Fiberglass Door with Non-impact Fiberglass Sidelite or Sidelites - Insulated Glass (XO or OX, OXO Configurations) Inswing or Outswing		X	
FL-15931.3	Timbergrain	Up to a 6/0 x 6/8 Opaque Fiberglass Door with or without Non-impact Fiberglass Sidelites - Insulated Glass (XX or OXXO Configurations) Inswing or Outswing		X	
FL-15931.4	Timbergrain	Up to a 3/0 x 6/8 Non-impact Glazed Fiberglass Door with Non-impact Glazed Fiberglass Sidelite or Sidelites - Insulated Glass (X, XO or OX, OXO Configurations) Inswing or Outswing		X	
FL-15931.5	Timbergrain	Up to a 6/0 x 6/8 Non-impact Glazed Fiberglass Door with or without Non-impact Fiberglass Sidelites - Insulated Glass (XX or OXXO Configurations) Inswing or Outswing		X	
FL-15931.6	Timbergrain	Up to a 3/0 x 8/0 Opaque Fiberglass Door (X Configuration) Inswing/Outswing		X	X
FL-15931.7	Timbergrain	Up to a 3/0 x 8/0 Opaque Fiberglass Door with Non-impact Fiberglass Sidelite or Sidelites - Insulated Glass (XO or OX, OXO Configurations) Inswing or Outswing		X	
FL-15931.8	Timbergrain	Up to a 6/0 x 8/0 Opaque Fiberglass Door with or without Non-impact Fiberglass Sidelites - Insulated Glass (XX or OXXO Configurations) Inswing or Outswing		X	
FL-15931.9	Timbergrain	Up to a 3/0 x 8/0 Non-impact Glazed Fiberglass Door with Non-impact Glazed Fiberglass Sidelite or Sidelites - Insulated Glass (X, XO or OX, OXO Configurations) Inswing or Outswing		X	
FL-15931.10	Timbergrain	Up to a 6/0 x 8/0 Non-impact Glazed Fiberglass Door with or without Non-impact Fiberglass Sidelites - Insulated Glass (XX or OXXO Configurations) Inswing or Outswing		X	

CUSTOM CAPABILITIES



Taylor Entrance Systems™ offers the capability for custom face and edge preps on fiberglass, steel- and wood-edge steel doors. Taylor's one-of-a-kind, state-of-the-art equipment has the capability to do virtually any lock, face bore, or edge prep that a commercial or residential job may require. These custom capabilities are available within the standard 10-day lead time.

FACE PREP EXAMPLES



EDGE PREP EXAMPLES

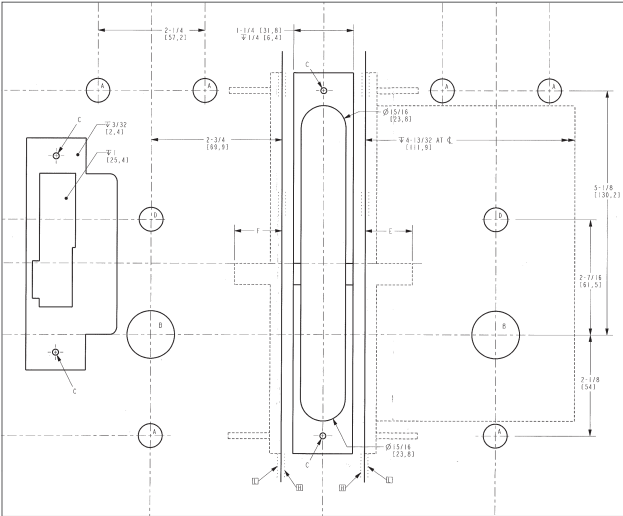


THREE POINT LOCK PREP

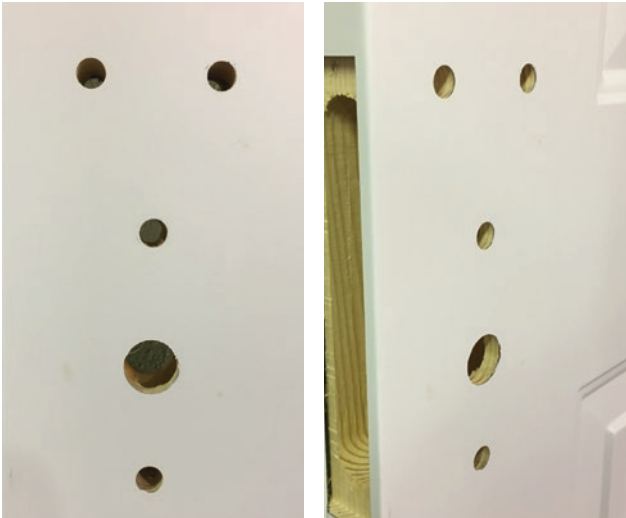


THREE POINT LOCK INSTALLED

GET US THE
TEMPLATE



See page 30 for order information



WE'LL MAKE
THE DOOR!

MADE TO ORDER FOR YOUR NEXT PROJECT

Built to Taylor spec, or to any spec you need.

Specs to match competitive brands.

Specs to match hollow metal frames.

Amweld, Republic, Ceco, Curries, Mesker, and more.

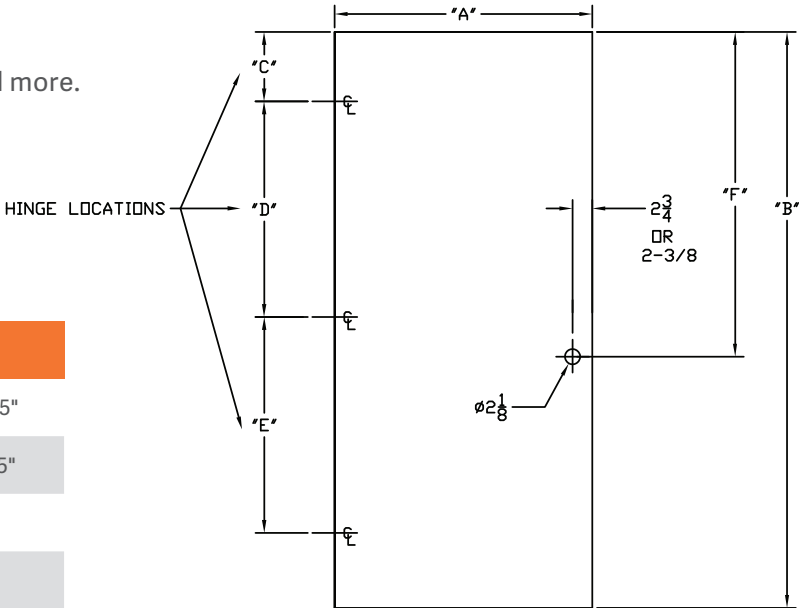
Specs to match light gauge metal frames.

IDP, Timley, Rediframe, and more.

SPECIAL HEIGHT & WIDTH

- STEEL-EDGE DOOR HEIGHT & WIDTHS**
- Up to 7'0" height, any width between 23.75" and 41.75"
- Over 7'0" height, any width between 23.75" and 35.75"
- Minimum height is 76"
- Maximum height is 95.25"

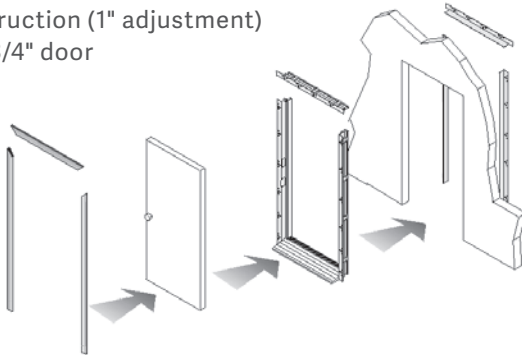
Doors built one at a time, to your specs.



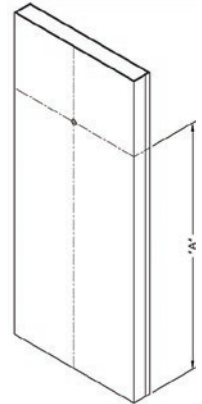
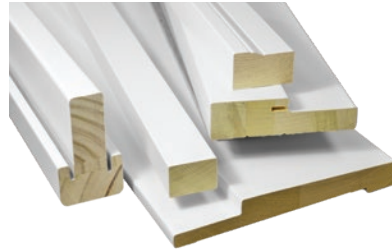
DOORS AVAILABLE PRE-HUNG*

STEEL FRAMES

- Two-piece adjustable steel frame - base jamb is installed in the opening and closer trim piece is attached from the opposite side
- 4-1/2" to 12-1/2" wall construction (1" adjustment) for 1-3/4" door

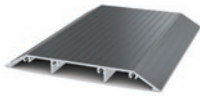


WOOD FRAMES

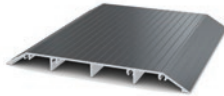


PEEPSITE PREP

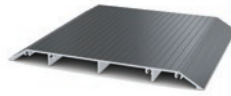
ADA SILLS



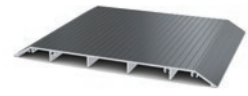
5" ADA SADDLE



6" ADA SADDLE



7" ADA SADDLE



8" ADA SADDLE

HANDING TO HAND A DOOR - Face it from the outside or key side

Left Hand Inswing
Hinges on left
Opens inward



Right Hand Inswing
Hinges on right
Opens inward



Left Hand Reverse
Hinges on left
Opens outward



Right Hand Reverse
Hinges on right
Opens outward



AVAILABLE HINGE PREPS



STANDARD 4"
NON-TEMPLATE
HINGE PREP



STANDARD 4"
ADJUSTABLE
NON-TEMPLATE
HINGE PREP



4" TEMPLATE
HINGE PREP



4-1/2" COMMERCIAL
TEMPLATE
HINGE PREP

CLOSER AND PANIC BAR PREPS



CLOSER BLOCK



PANIC PREP &
CLOSER PLATES



HEAD & FOOT
BOLT

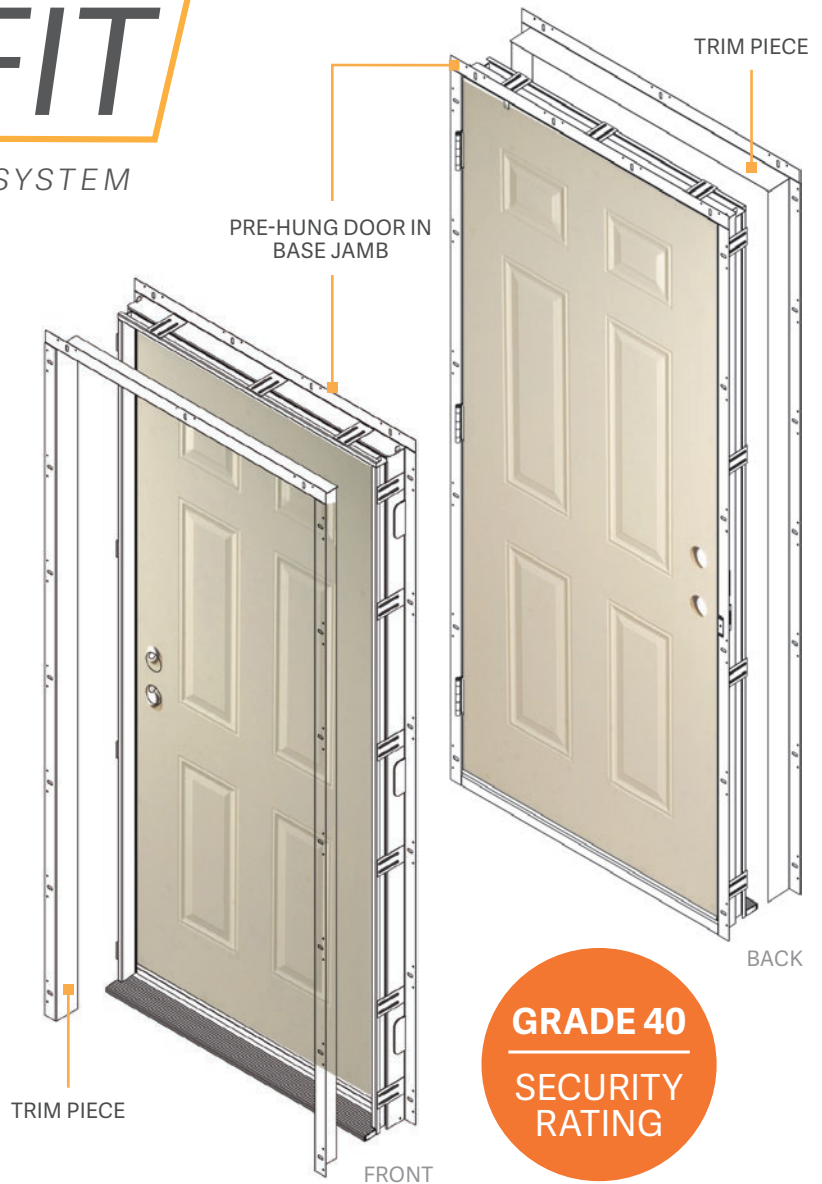


MULTI-PURPOSE
PREP

QUIKFIT

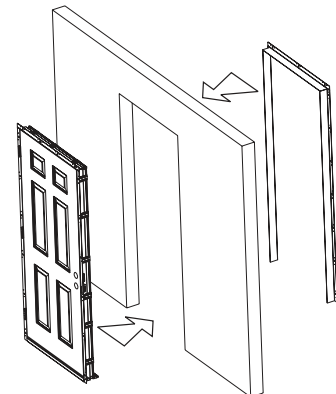
FITTED DOOR SYSTEM

- 🔥 90-minute fire rated
- Ideal for multi-family and light commercial applications
- Features a 22- or 24-gauge steel-edge smooth steel door, pre-hung into an adjustable steel frame for ease of installation
- Available in 6/8, 7/0, and 8/0 heights
- Full steel-edge perimeter provides additional strength and a Grade 40 security rating
- Design Pressure Ratings of +/- 60 up to 3670
- Two-piece adjustable steel frame - base jamb is installed in the opening and closer trim piece is attached from the opposite side
- 4-1/2" to 9-1/2" wall construction (1" adjustment) for 1-3/4" door
- 10-year warranty on steel-edge door panel, 1-year warranty on adjustable steel frame
- Florida Building Code (FBC) and Texas Department of Insurance (TDI) approved



INSTALLS IN ONLY 3 STEPS

- 1 TILT
- 2 FASTEN
- 3 TRIM



AVAILABILITY

No order is too big or too small for Taylor.

1 LEAD TIMES

Stock sizes and profiles ship in 10 working days or less.

2 ADDITIONAL SIZES/PROFILES

Additional sizes and door profiles are available. Non-stock orders may have an extended lead time.

3 NO MINIMUMS OR MAXIMUMS

With no minimum or maximum order requirements, you can get what you need, when you need it.

4 HOW TO ORDER

Contact our Customer Service department to place your order.

Phone: 800.248.3600

Fax: 800.252.5468

Email: sales@taylordoor.com



70+ YEARS OF INNOVATION

MICHIGAN MADE

Passion, hard work and respect – it's the culture of our workplace. We meticulously test for quality every day to ensure that you are receiving the best product we can produce. When you choose Taylor, you are choosing quality. Our products are built with pride and confidence, giving you the satisfaction of buying a high-quality, American made, reliable product.

HARD WORK + DEDICATION

We've established a management philosophy in which teamwork plays an important role. Our employees work together to manufacture quality entrance systems while our customers work closely with professionals to meet the demands of the homeowners.

PRODUCT INNOVATION

An unwavering commitment to beauty, quality, and value has allowed Taylor Entrance Systems™ to develop a long history of innovation, bringing numerous products to the market that have helped to further shape the fenestration industry.

We are dedicated to providing innovative solutions and value-added products to fill the needs in an ever-changing marketplace.

PARTNERSHIP

At Taylor Entrance Systems™, we credit our success to our dedicated employees, the quality of our products and the integrity of our customers. Building meaningful relationships in all aspects of our business is a priority.



WE ARE AMERICA'S
DOORMAKER

70+ YEARS OF INNOVATION

MICHIGAN MADE SINCE 1946



TAYLOR ENTRANCE SYSTEMS™
631 North First Street
West Branch, Michigan 48661

sales@taylordoor.com
office: 800.248.3600
fax: 800.252.5468

TAYLOR
Entrance Systems™
AMERICA'S DOORMAKER