



Wolf Home Products® is an innovator in the building products industry. We've cultivated more than 175 years of business experience into a total satisfaction guarantee. With our vast inventory of kitchen and bath, outdoor living and building products, we deliver your orders in a fraction of the time and ensure you get unparalleled value — when and where you need it. Wolf stands behind our service because, above all, Wolf stands behind you.

For a complete line of Wolf products, including these items and more, please visit our website.



Kitchen & Bath



Outdoor Living



Building Products

[wolffhomeproducts.com](http://wolffhomeproducts.com) | © 2019 Wolf Home Products. All Rights Reserved.

All photos are representative of product. Please review an actual product sample with your dealer before making your final selection. Information contained within is subject to change without notice.



WBM\_SS\_0219\_WHP



WOLF HOME PRODUCTS®

C A B I N E T R Y

**BUILDERS MARK™**  
FROM WOLF HOME PRODUCTS®

## THE BUDGET-FRIENDLY CHOICE FOR SPACES BIG AND SMALL

Builders Mark cabinets feature quality wood doors and a variety of smart storage solutions as well as functional and decorative accessories to make any size project your own. Whether you're creating a large decorative space or building a small galley kitchen, when you choose Builders Mark cabinets your imagination won't be limited—even if your budget is.



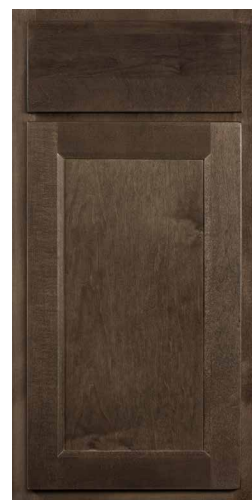
### SIERRA



Espresso Stain



Harvest Brown Stain



Graphite Stain



Nutmeg Stain



White Paint

### CABINET FEATURES

- Durable finish resists scratches, dents and dings
- 1/2" industrial-grade furniture board drawers and cabinet sides
- Solid-wood face frames dadoed and joined with wood screws or dowels
- Side-mounted drawer guides and fully captured drawer bottoms
- \*Six-way adjustable, fully concealed hinges
- Mortise and tenon, flat panel door
- Easy-clean interior

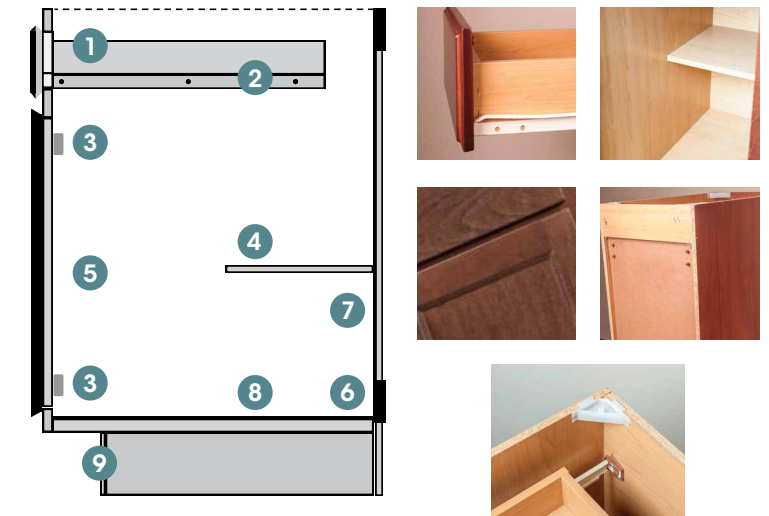
### WALL CABINET CONSTRUCTION

- A** 1/2" industrial-grade furniture-board top
  - B** \*Six-way adjustable, fully concealed, self-closing hinge
  - C** 1/2" industrial-grade furniture-board adjustable shelf
  - D** Low-pressure melamine sides with light maple finish interior
  - E** 1/2" industrial-grade furniture-board hanging rail
  - F** 1/2" industrial-grade furniture-board bottom
  - G** 1/8" laminated MDF cabinet back
- All face frames are 3/4" x 1 1/2" solid-wood, dadoed and joined with screws or doweled
  - All single-door cabinets are hinged left. Wall cabinets can be flipped during installation for right hinge applications



### BASE CABINET CONSTRUCTION

- 1** 1/2" industrial-grade furniture-board drawer box in light maple stain
- 2** Side-mounted, epoxy-coated, 75 lbs. nylon, lubricated roller glides
- 3** \*Six-way adjustable, fully concealed, self-closing hinge
- 4** 1/2" industrial-grade furniture-board, half-depth fixed shelf
- 5** Low-pressure melamine sides with light maple finish interior
- 6** 1/2" industrial-grade furniture-board hanging rail
- 7** 1/8" laminated MDF cabinet back
- 8** 1/2" industrial-grade furniture-board bottom
- 9** 1/2" furniture-board toekick



\*Orders from inventory: Conversion from two-way adjustable to six-way adjustable hinge is in process via a rolling change. Hinge types may be mixed until inventory change is fully implemented.