

STOCKED INTERIOR DOORS

BUILDING PRODUCTS INC. - SIOUX FALLS, SD

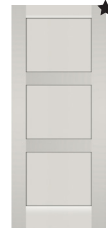
STILE & RAIL



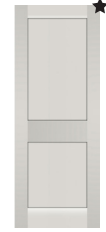
6 Panel Raised
(Oak)
1-6 | 2-0 | 2-4 | 2-6 | 2-8 | 3-0



3 Panel Craftsman
(Knotty Alder, Oak, Poplar or Primed)
1-6 | 2-0 | 2-4 | 2-6 | 2-8 | 3-0



3 Panel Stack
(Poplar)
1-6 | 2-0 | 2-4 | 2-6 | 2-8 | 3-0



2 Panel Flat
(Poplar or Primed)
1-6 | 2-0 | 2-4 | 2-6 | 2-8 | 3-0



Rain Glass French Slab
(Poplar)
2-4



Clear or Frosted Glass French
(Poplar or Primed)
2-0 | 2-4 | 2-6



1 Panel Flat
(Poplar or Primed)
1-6 | 2-0 | 2-4 | 2-6 | 2-8 | 3-0



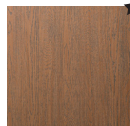
180 Planked Barn Door
(Knotty Alder)
3-0

EMBOSSED HOLLOW CORE 1-3/8"

Color Swatches:



Country Oak



Premier Oak

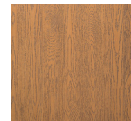


Slate Gray

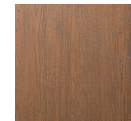
Embossed HC Available In: 1-6 | 2-0 | 2-4 | 2-6 | 2-8 | 2-10 | 3-0

EMBOSSED SOLID CORE 1-3/4"

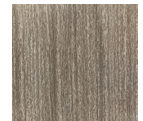
Color Swatches:



Country Oak



Premier Oak



Slate Gray

Embossed SC Available In: 3-0

SOLID CORE 1-3/4"



Flush
(Birch)
2-6 | 2-8 | 3-0



Flush
(Red Oak)
3-0



Flush
(Slate Gray-60 Minute)
3-0



Flush
(Slate Gray)
3-0

STYLES MARKED WITH A ★ ARE AVAILABLE IN BIFOLD 2-0, 2-6, & 3-0

Standard Oak Stain Colors



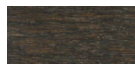
CLEAR



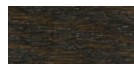
BURNT



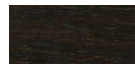
JAVA



CHARCOAL



DARK MOCHA



MOLASSES

Standard Poplar Stain Colors



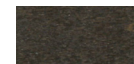
CLEAR



BURNT



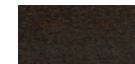
JAVA



CHARCOAL



DARK MOCHA



MOLASSES

Images shown are for illustration purposes only. Color blends may vary

STOCKED INTERIOR DOORS

BUILDING PRODUCTS INC. - SIOUX FALLS, SD

★ = BIFOLD OPTIONS AVAILABLE

HOLLOW CORE MOULDED 1-3/8"



Flush (Birch or Red Oak)
1-6 | 2-0 | 2-4 | 2-6 | 2-8 | 3-0



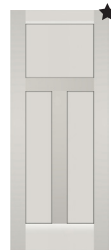
Colonist 6 Panel Smooth
1-6 | 2-0 | 2-4 | 2-6 | 2-8 | 3-0



Monroe 2 Panel Sq. Flat Smooth
1-6 | 2-0 | 2-4 | 2-6 | 2-8 | 3-0



Colonist 6 Panel Textured
1-6 | 2-0 | 2-4 | 2-6 | 2-8 | 2-10 | 3-0



Craftsman 3 Panel Flat Smooth
1-6 | 2-0 | 2-4 | 2-6 | 2-8 | 2-10 | 3-0



Madison 1 Panel Flat Smooth
1-6 | 2-0 | 2-4 | 2-6 | 2-8 | 3-0

SOLID CORE MOULDED 1-3/8"



Flush
(Red Oak)
1-6 | 2-0 | 2-4 | 2-6 | 2-8 | 3-0



Colonist 6 Panel Smooth
1-6 | 2-0 | 2-4 | 2-6 | 2-8 | 3-0



Craftsman 3 Panel Smooth
1-6 | 2-0 | 2-4 | 2-6 | 2-8 | 3-0



Birkdale 3 Panel Stack Flat
1-6 | 2-0 | 2-4 | 2-6 | 2-8 | 3-0



Monroe 2 Panel Sq. Smooth
1-6 | 2-0 | 2-4 | 2-6 | 2-8 | 3-0