

STOCKED INTERIOR DOORS

BUILDING PRODUCTS INC. - SIOUX FALLS, SD

STILE & RAIL



6 Panel Raised
(Oak, or Poplar)

1-6 | 2-0 | 2-4 | 2-6 | 2-8 | 3-0



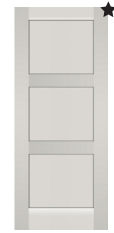
2 Panel Square Raised
(Knotty Alder or Poplar)

1-6 | 2-0 | 2-4 | 2-6 | 2-8 | 3-0



3 Panel Craftsman
(Knotty Alder, Oak, or Poplar)

1-6 | 2-0 | 2-4 | 2-6 | 2-8 | 3-0



3 Panel Stack
(Poplar, or Primed)

1-6 | 2-0 | 2-4 | 2-6 | 2-8 | 3-0



2 Panel Arch
(Poplar)

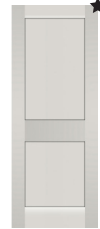
1-6 | 2-0 | 2-4 | 2-6 | 2-8 | 3-0



4 Panel Raised
(Oak or Poplar)

1-6 | 2-0 | 2-4 | 2-6 | 2-8 | 3-0

Only Oak bifolds
stocked in this style



2 Panel Flat
(Poplar or Primed)

1-6 | 2-0 | 2-4 | 2-6 | 2-8 | 3-0



5 Panel Stack
(Poplar)

1-6 | 2-0 | 2-4 | 2-6 | 2-8 | 3-0



Rain Glass French Slab
(Poplar)

2-4



1 Panel Flat
(Poplar)

1-6 | 2-0 | 2-4 | 2-6 | 2-8 | 3-0



180 Planked Barn Door
(Knotty Alder)

3-0

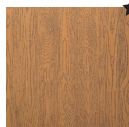


185 Planked Barn Door
(Knotty Alder)

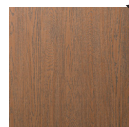
3-0

EMBOSSED HOLLOW CORE 1-3/8"

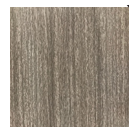
Color Swatches:



Country Oak



Premier Oak

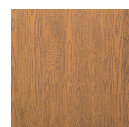


Slate Gray

Embossed HC Available In: 1-6 | 2-0 | 2-4 | 2-6 | 2-8 | 2-10 | 3-0

EMBOSSED SOLID CORE 1-3/4"

Color Swatches:



Country Oak



Premier Oak



Slate Gray

Embossed SC Available In: 3-0

SOLID CORE 1-3/4"



Flush
(Birch)

2-6 | 2-8 | 3-0



Flush
(Red Oak)

3-0



Flush
(Red Oak)

3-0 x 7-0



Flush
(Red Oak-60 Minute)

3-0



Flush
(Slate Gray)

3-0

STYLES MARKED WITH A ★ ARE AVAILABLE IN BIFOLD 2-0, 2-6, & 3-0

Premium Oak Stain Colors



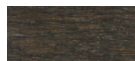
CLEAR



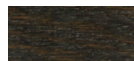
BURNT



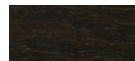
JAVA



CHARCOAL



DARK MOCHA



MOLASSES

Premium Poplar Stain Colors



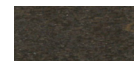
CLEAR



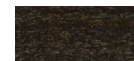
BURNT



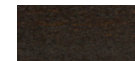
JAVA



CHARCOAL



DARK MOCHA



MOLASSES

Images shown are for illustration purposes only. Color blends may vary

STOCKED INTERIOR DOORS

BUILDING PRODUCTS INC. - SIOUX FALLS, SD

★ = BIFOLD OPTIONS AVAILABLE

HOLLOW CORE MOULDED 1-3/8"



Flush (Birch, Espresso Birch, Laun, or Red Oak)
1-6 | 2-0 | 2-4 | 2-6 | 2-8 | 3-0



Caiman 2 Panel Arch Smooth (Primed)
1-6 | 2-0 | 2-4 | 2-6 | 2-8 | 3-0



Cambridge 2 Panel Square (Primed)
1-6 | 2-0 | 2-4 | 2-6 | 2-8 | 3-0



Colonist 6 Panel Smooth (Primed)
1-6 | 2-0 | 2-4 | 2-6 | 2-8 | 3-0



Monroe 2 Panel Sq. Flat Smooth (Primed)
1-6 | 2-0 | 2-4 | 2-6 | 2-8 | 3-0



Conmore 5 Panel Smooth (Primed)
1-6 | 2-0 | 2-4 | 2-6 | 2-8 | 3-0



Colonist 6 Panel Textured (Prefinished Snow White)
1-6 | 2-0 | 2-4 | 2-6 | 2-8 | 2-10 | 3-0



Craftsman 3 Panel Flat Smooth (Primed or Prefinished Snow White)
1-6 | 2-0 | 2-4 | 2-6 | 2-8 | 2-10 | 3-0



Madison 1 Panel Flat Smooth (Primed or Prefinished Snow White)
1-6 | 2-0 | 2-4 | 2-6 | 2-8 | 3-0

SOLID CORE MOULDED 1-3/8"



Flush (Red Oak)
1-6 | 2-0 | 2-4 | 2-6 | 2-8 | 3-0



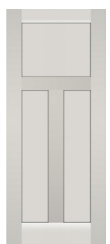
Caiman 2 Panel Arch Smooth (Primed)
1-6 | 2-0 | 2-4 | 2-6 | 2-8 | 3-0



Colonist 6 Panel Smooth (Primed)
1-6 | 2-0 | 2-4 | 2-6 | 2-8 | 3-0



Conmore 5 Panel Smooth (Primed)
1-6 | 2-0 | 2-4 | 2-6 | 2-8 | 3-0



Craftsman 3 Panel Smooth (Primed)
1-6 | 2-0 | 2-4 | 2-6 | 2-8 | 3-0



Birkdale 3 Panel Stack Flat (Primed)
1-6 | 2-0 | 2-4 | 2-6 | 2-8 | 3-0



Cambridge 2 Panel Sq. Smooth (Primed)
1-6 | 2-0 | 2-4 | 2-6 | 2-8 | 3-0



Monroe 2 Panel Sq. Smooth (Primed)
1-6 | 2-0 | 2-4 | 2-6 | 2-8 | 3-0