

## FOREST BAY



*TR-138 in white with colonial windows*

*Timeless, Stylish & Affordable!*



*TR-II in earthtone with colonial windows*

The Forest Bay collection of insulated thermal doors combines the stylish appearance of woodgrained embossment with the rugged durability of heavy gauge steel thermally bonded to dense polystyrene insulation. This collection delivers thermal efficiency available in three door thicknesses – 1 3/8, 2 & 3 inch, while offering a full range of colors and window options. Strength and beauty come together in one package tailor made to fit your tastes!

# FOREST BAY OPTIONS

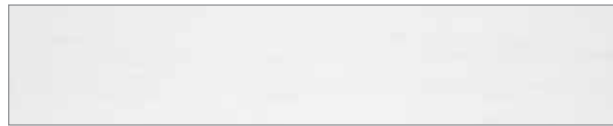
## Panel Options



CLASSIC



LONG



FLUSH

## Window Options

### TR & TF



CASCADE



CATHEDRAL



COLONIAL



PLAIN



SUNBURST



SAVANNA



SHERWOOD

### LP



HERITAGE



PLAIN LONG PANEL



STOCKBRIDGE



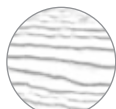
STOCKTON



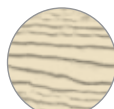
WYNDBRIDGE

## Color Options\*

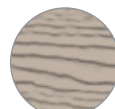
<sup>1</sup> Woodgrain colors not available in TF models.



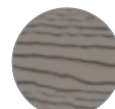
WHITE



ALMOND



SANDSTONE



BEIGE



EARTHSTONE



SEPIA



BROWN



GREEN



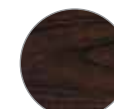
BLACK



GOLDEN OAK<sup>1</sup>



MEDIUM OAK<sup>1</sup>



WALNUT<sup>1</sup>

\*Printed colors may vary slightly from actual colors. Please visit your local dealer for actual color swatches.

## BIDIRECTIONAL WOODGRAIN DOORS

---

The *beauty & style* of handcrafted wood panel doors without the high maintenance. North Central Door is pleased to offer three bidirectional woodgrain finishes, giving a realistic, luxurious look.



*TR-138 in medium oak*

### WOODGRAIN DOOR DETAILS

---

- Available in Walnut, Medium Oak and Golden Oak, these finishes simulate an authentic wood panel constructed door with contrasting woodgrain patterns between stiles and panels.
- Five long panel window options & seven short panel options are available in each color.
- Stucco embossment provides a textured appearance without diminishing the woodgrain accents.

### WOODGRAIN FINISH OPTIONS

---



WALNUT



MEDIUM OAK



GOLDEN OAK

# FOREST BAY PRODUCT INFORMATION



*LP-138 in sandstone with wyndbridge windows*

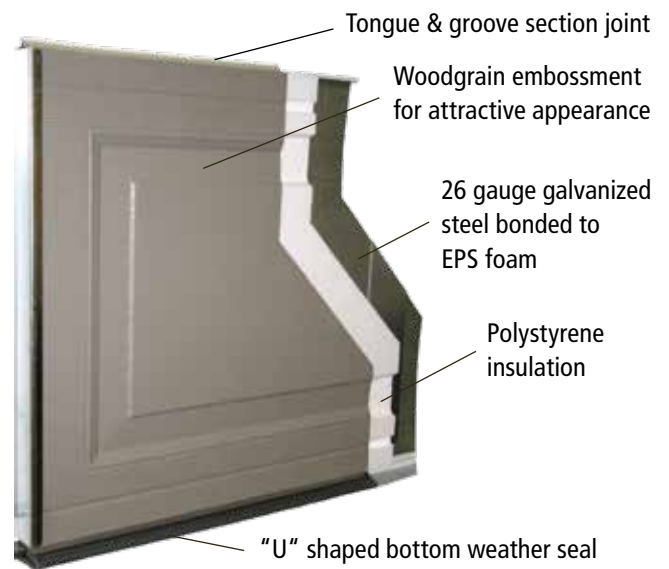
## ADDITIONAL FEATURES

- Woodgrain embossed, hot-dipped galvanized steel is pre-finished exterior and interior then coated with baked-on polyester primer and acrylic finish.
- Wind load package available.
- Keyed or slide lock set.
- Nylon rollers for quiet operation.
- Window glass available - double strength or insulated.
- Environmentally friendly polystyrene insulation.

## WHY CHOOSE NORTH CENTRAL DOOR?

North Central Door Company understands that you have high standards when it comes to enhancing the appearance of your home. That is why we have been uncompromising in maintaining the high quality of our products since our beginning in 1966.

## CONSTRUCTION



- 3-layer thermal door with section thickness available in 1 3/8", 2" and 3".
- Polystyrene insulation bonded to 26-gauge steel skin providing thermal protection to the edge of each section.
- Uniquely designed tongue & groove section joints create a weather-resistant seal against rain, snow and wind.
- Durable PVC seals provide a continuous thermal break on all section joints, reducing thermal transmissions.
- 18-gauge hot-dipped galvanized stiles are carried the full height of the sections providing superior strength and durability compared with commonly used hinge pads.
- Hinges are 14-gauge, hot-dipped galvanized steel for lasting durability.
- Heavy-duty "U" shaped bottom weather seal helps protect against elements.
- R-values per section thickness: 1 3/8" = 6.9, 2" = 8.8 & 3" = 15.1

*For complete specifications, visit [northcentraldoor.com](http://northcentraldoor.com)*

Distributed By:



As NCDC continuously strives to improve our products, all specifications listed on this brochure are subject to change without notice or obligation.

NCDC020719



**northcentral**  
DOOR COMPANY

[WWW.NORTHCENTRALDOOR.COM](http://WWW.NORTHCENTRALDOOR.COM)