



 **JamesHardie™**

Siding | Trim



Achieve authentic character and
UNCOMPROMISING PERFORMANCE.

**KANSAS CITY
OMAHA
ST. LOUIS**
Product Catalog



It's time to
BUILD SOMETHING TIMELESS.



Installed on over 8 million homes* from coast to coast, James Hardie® fiber cement siding products are designed to resist the most extreme conditions while delivering long term beauty and lower maintenance. Enjoy the warm, natural character of wood with unprecedented peace of mind. It's easy to see what makes James Hardie the market leader.

UNIQUE FORMULATION

We use the highest quality raw materials and proprietary additives for enhanced strength and moisture protection.

FINISHING TECHNOLOGY

Baked-on color delivers a beautiful finish that resists fading and makes a lasting impression.

COMPLETE EXTERIOR

Offers homeowners an unrivaled collection of design options with exceptional warranties through a single, trusted manufacturer.

*Estimate based on total James Hardie siding sales through 2016 and average housing unit size.

CONTENTS

4	HardieZone® System
6	Unique Formulation
8	Finishing Technology
10	James Hardie Complete Exterior™
12	HardiePlank® Lap Siding
14	HardiePanel® Vertical Siding
16	HardieShingle® Siding
18	HardieTrim® Boards
20	HardieSoffit® Panels
22	Statement Collection™ Products
24	Color Inspiration
26	HardieWrap® Weather Barrier
27	Finishing Touches
28	The James Hardie Difference
30	Warranty and Endorsements

HardieZone® System

Only James Hardie® fiber cement products are Engineered for Climate®. In the northern U.S. and Canada, HZ5® products resist shrinking, swelling and cracking even after years of wet or freezing conditions. HZ10® products help protect homes from hot, humid conditions, blistering sun and more.

With James Hardie® siding and trim, homeowners have an exterior that's tougher than the elements and easy on the eyes.

NO MATTER WHAT NATURE BRINGS



HardieShingle®
Straight Edge
Timber Bark



HardieTrim®
boards
Timber Bark

HardiePlank®
lap siding
Khaki Brown

TOUGHER THAN THE ELEMENTS



Stands up to storms and harsh weather



Water resistant to protect against swelling, warping and cracking; also resists mold damage



Won't be eaten by animals or insects



Fire resistant



Helps reduce time and money spent on maintenance

Resist the elements
WITH IRRESISTIBLE CHARM.

Unique Formulation

HZ5[®] Substrate

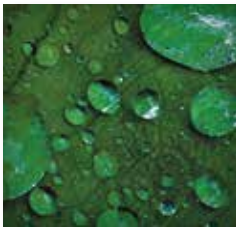
Not all fiber cement is the same. The James Hardie HZ5 product formulation contains the highest quality raw materials. Proprietary additives, combined with an innovative manufacturing process and product design, create a substrate specifically engineered to reduce moisture and resist damage from wet or freezing conditions.

PROPRIETARY ENHANCEMENTS CREATE DURABLE JAMES HARDIE[®] SIDING



Perfect balance of strength and workability

Our balance of high-quality Portland cement, sand and cellulose fiber delivers the best combination of strength and workability.



Enhanced moisture resistance for unmatched durability

Patented and proprietary additives are chemically bonded within the HZ5[®] substrate matrix to provide durable moisture resistance.



Increased dimensional stability

Our siding is engineered at the microscopic level to create a fiber cement composite with superior dimensional stability that helps protect against shrinking and splitting.



MADE IN THE
USA ★



Integrity is ingrained
IN EVERYTHING WE DO.



HardieTrim®
boards
Arctic White

HardiePlank®
lap siding
Arctic White



The advanced design of HZ5® lap siding improves drainage from top to bottom.

In addition to the enhanced moisture resistance of our product formulation, HardiePlank® HZ5® lap siding features a modified profile with a sloped top and bullnose drip edge for improved drainage over the entire outer face of the board.



Sloped Top

Positive slope at top drains moisture to outer face of lap



Profiled Drip Edge

Bottom bullnose drip edge allows moisture to drain away from lap

Finishing Technology

Primer

A quality primer is the first step to ensuring that the paint color you select beautifully expresses a home's true character now – and for years to come. Our distinctive primers are climate-tested and engineered to enhance the performance of paint on James Hardie® fiber cement siding products. It helps to provide consistent, long-lasting paint adhesion, even in the most demanding conditions.

ColorPlus® Technology

Our advanced ColorPlus® Technology finishes deliver the ultimate in aesthetics and performance. Our products aren't simply painted at the factory. Multiple coats of color are baked onto the board, creating a vibrant, consistent finish that performs better, lasts longer and looks brighter on your homes.



Superior finish adhesion

Our proprietary coating is engineered for superior adhesion to our substrate and applied to the surface, edges and features for durable performance.



Superior color retention

Finish is cured onto boards after each coating step for a stronger bond, which allows for exceptional resistance to cracking, peeling and chipping.



Superior UV resistance

Multi-coat, baked on finish helps retain color vibrancy longer compared to vinyl siding and typical field paints on other siding products.



ColorPlus®
Technology



HardieShingle®
Straight Edge
Cobble Stone

HardieTrim®
boards
Arctic White

HardiePlank®
lap siding
Cobble Stone

For timeless beauty **BEGIN WITH THE FINISH.**

Our finishes help eliminate stress and reduce costly weather delays when it's too cold or damp to paint for extended periods. Now there's no reason to question whether or not sub-optimal painting conditions will negatively affect your paint job. In fact, there's no longer any need to paint on-site during installation.

ColorPlus® Technology finishes are fully cured in a controlled environment and arrive on your job site ready for year-round installation.





ColorPlus®
Technology
Pearl Gray

ColorPlus®
Technology
Iron Gray

HardieShingle®
Siding*

HardiePanel®
Vertical Siding &
HardieTrim®
Batten Boards

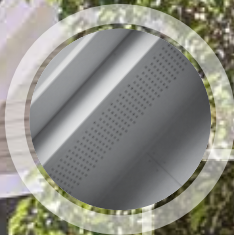
HardiePlank®
Lap Siding

For complete confidence wrap your
ENTIRE EXTERIOR WITH JAMES HARDIE.

James Hardie Complete Exterior™

Top to bottom, our exterior product line is defined by excellent performance, aesthetics and design options.

Provide protection from the elements, showcase a homeowner's individual style and install peace of mind with exceptional warranties through a single, trusted manufacturer.



HardieSoffit®
Panels*



HardieTrim®
Boards

HardiePlank®

Sleek and strong, HardiePlank® lap siding is not just our best-selling product – it's the most popular brand of siding in America.

With a full spectrum of colors and textures, homeowners can enjoy protection from the elements and the versatility to make their dream home a reality. From Victorians to Colonials, HardiePlank lap siding sets the standard in exterior cladding.

HardieTrim®
boards
Arctic White

HardiePlank®
lap siding
Select Cedarmill®
Khaki Brown

A classic look for
THE HOME OF THEIR DREAMS.

HardiePlank®

Thickness 5/16 in
Length 12 ft planks

SELECT CEDARMILL® & SMOOTH

	Width	5.25 in	6.25 in	7.25 in	8.25 in	9.25 in*	12 in*
Exposure		4 in	5 in	6 in	7 in	8 in	10.75 in
Prime Pcs/Pallet		360	308	252	230	190	152
ColorPlus Pcs/Pallet		324	280	252	210	—	—
Pcs/Sq		25.0	20.0	16.7	14.3	12.5	9.3

SELECT CEDARMILL®



	Width	5.25 in	6.25 in	7.25 in	8.25 in	9.25 in*	12 in*
STATEMENT COLLECTION™					✓		
DREAM COLLECTION™		✓	✓	✓	✓		
PRIME		✓	✓	✓	✓	✓	✓

SMOOTH



	Width	5.25 in	6.25 in	7.25 in	8.25 in	9.25 in*	12 in*
STATEMENT COLLECTION™							
DREAM COLLECTION™		✓	✓	✓	✓		
PRIME		✓	✓	✓	✓	✓	✓

BEADED CEDARMILL®

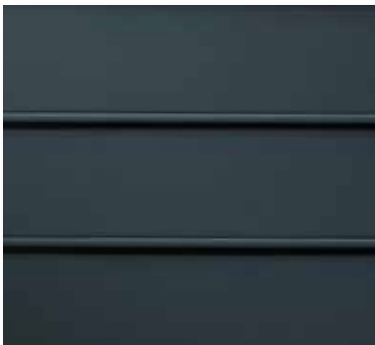


BEADED CEDARMILL® & BEADED SMOOTH

Width	8.25 in
Exposure	7 in
Prime Pcs/Pallet	240
ColorPlus Pcs/Pallet	210
Pcs/Sq	14.3

STATEMENT COLLECTION™	—
DREAM COLLECTION™	✓
PRIME	✓

BEADED SMOOTH



*9.25 in and 12 in widths do not feature the drip edge

HardiePanel®

HardiePanel® vertical siding delivers style and substance. When combined with HardieTrim® boards, it achieves the rustic board-and-batten look that defines cottage charm. The covered seams contribute to a well-insulated home.

Its crisp, clean lines make HardiePanel vertical siding a smart choice for strong, contemporary designs.

HardiePanel®
vertical siding
Evening Blue

HardieTrim®
Batten Boards
Evening Blue

True to the tradition of
PERFORMANCE AND BEAUTY.

HardiePanel®

Thickness 5/16 in

SELECT CEDARMILL®, SMOOTH, STUCCO & SIERRA 8

	Size 4 ft x 8 ft	4 ft x 9 ft	4 ft x 10 ft
Prime Pcs/Pallet	50	50	50
ColorPlus Pcs/Pallet	50	–	50
Pcs/Sq	3.2	2.8	2.5

SELECT CEDARMILL®



	Size 4 ft x 8 ft	4 ft x 9 ft	4 ft x 10 ft
STATEMENT COLLECTION™			✓
DREAM COLLECTION™	✓		✓
PRIME	✓	✓	✓

SMOOTH



	Size 4 ft x 8 ft	4 ft x 9 ft	4 ft x 10 ft
STATEMENT COLLECTION™			✓
DREAM COLLECTION™	✓		✓
PRIME	✓	✓	✓

STUCCO



	Size 4 ft x 8 ft	4 ft x 9 ft	4 ft x 10 ft
STATEMENT COLLECTION™			
DREAM COLLECTION™	✓		✓
PRIME	✓	✓	✓

SIERRA 8



	Size 4 ft x 8 ft	4 ft x 9 ft	4 ft x 10 ft
STATEMENT COLLECTION™			
DREAM COLLECTION™			
PRIME	✓	✓	✓

HardieShingle®

Restore the look of a grand Cape Cod or add distinction to a handsome bungalow. HardieShingle® siding embodies the enchanting look of cedar shingles with lower maintenance.

Better than the real thing, HardieShingle siding resists rotting, curling, warping and splitting.

HardieTrim®
board
Arctic White

HardieShingle®
Straight
Edge Panel
Pearl Gray

Achieve the handcrafted
LOOK OF CEDAR.

HardieShingle®

Thickness 1/4 in



STAGGERED EDGE PANEL

Length	48 in
Height	15.25 in
Exposure	6 in
Prime Pcs/Pallet	100
ColorPlus Pcs/Pallet	100
Sq/Pallet	2
Pcs/Sq	50.0

STATEMENT COLLECTION™

DREAM COLLECTION™

PRIME



STRAIGHT EDGE PANEL

Length	48 in
Height	15.25 in
Exposure	7 in
Prime Pcs/Pallet	86
ColorPlus Pcs/Pallet	86
Sq/Pallet	2
Pcs/Sq	43.0

STATEMENT COLLECTION™

DREAM COLLECTION™

PRIME



HALF ROUNDS*

Length	48 in
Height	15.25 in
Exposure	7 in
Prime Pcs/Pallet	86
Sq/Pallet	2
Pcs/Sq	43.0

STATEMENT COLLECTION™

DREAM COLLECTION™

PRIME

*Available in St. Louis District only

HardieTrim®

Form meets function at every angle with HardieTrim® boards. With an authentic look, HardieTrim boards provide design flexibility for columns, friezes, doors, windows and other accent areas.

Better than wood, it will complement your long-lasting, lower maintenance James Hardie® siding – adding punctuation to your design statement.

HardieTrim®
boards
Khaki Brown

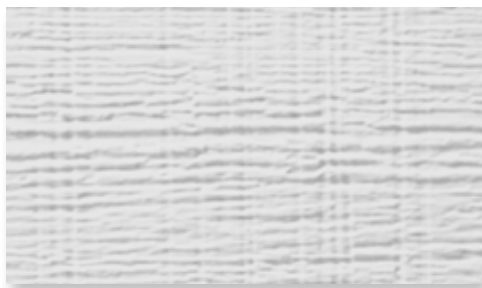
HardiePlank®
lap siding
Navajo Beige

The performance you require
THE DISTINCTIVENESS YOU DESIRE.

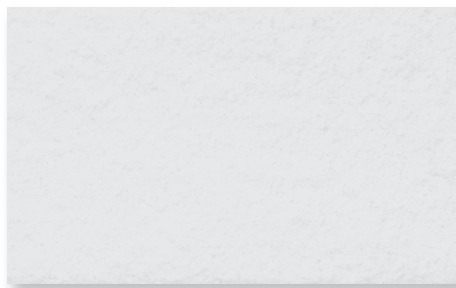
HardieTrim®

Length 12 ft boards

ROUGHSAWN



SMOOTH



4/4 ROUGHSAWN

Thickness	.75 in				
Width	3.5 in	5.5 in	7.25 in	9.25 in	11.25 in
Prime Pcs/Pallet	312	208	156	104	104
ColorPlus Pcs/Pallet	312	208	156	104	104
STATEMENT COLLECTION™	AW	AW	✓	AW	AW
DREAM COLLECTION™	✓	✓	✓	✓	✓
PRIME	✓	✓	✓	✓	✓

4/4 SMOOTH

Thickness	.75 in				
Width	3.5 in	5.5 in	7.25 in	9.25 in	11.25 in
Prime Pcs/Pallet	312	208	156	104	104
ColorPlus Pcs/Pallet	312	208	156	104	104
STATEMENT COLLECTION™	AW	AW	✓	AW	AW
DREAM COLLECTION™	✓	✓	✓	✓	✓
PRIME	✓	✓	✓	✓	✓

5/4 ROUGHSAWN

Thickness	1 in					
Width	3.5 in	4.5 in	5.5 in	7.25 in	9.25 in	11.25 in
Prime Pcs/Pallet	240	200	160	120	80	80
ColorPlus Pcs/Pallet	240	200	160	120	80	80
STATEMENT COLLECTION™	✓		✓	✓	AW	AW
DREAM COLLECTION™	✓	✓	✓	✓	✓	✓
PRIME	✓	✓	✓	✓	✓	✓

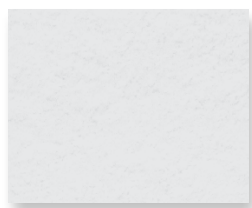
5/4 SMOOTH

Thickness	1 in					
Width	3.5 in	4.5 in	5.5 in	7.25 in	9.25 in	11.25 in
Prime Pcs/Pallet	240	200	160	120	80	80
ColorPlus Pcs/Pallet	240	200	160	120	80	80
STATEMENT COLLECTION™	✓		✓	✓	AW	✓
DREAM COLLECTION™	✓	✓	✓	✓	✓	✓
PRIME	✓	✓	✓	✓	✓	✓

AW - Arctic White only. Not available in the standard trim product Statement Collection™ color offering.

BATTEN BOARDS

SMOOTH



RUSTIC GRAIN®



SMOOTH & RUSTIC GRAIN®

Thickness	.75 in
Length	2.5 in
Prime Pcs/Pallet	437
ColorPlus Pcs/Pallet	190

STATEMENT COLLECTION™	✓
DREAM COLLECTION™	✓
PRIME	✓

A home is only as strong as its weakest point. HardieSoffit® panels reinforce your work by protecting the vulnerable gap between eaves and exterior walls.


Available in vented, non-vented and a range of pre-cut sizes, these panels complete your design and help protect it from moisture and pests.

VENTILATION BENEFITS

Using vented soffit improves ventilation in the attic space and reduces the chance of water vapor condensation that can lead to issues such as mold and mildew growth, stained ceilings and damage to the framing of the house.

In warm climates, HardieSoffit panels allow hot, humid air to escape, which not only helps prevent condensation in the attic, but can also help reduce air conditioning costs.

In cool climates, HardieSoffit panels help prevent condensation from forming on the interior side of the roof sheathing and reduce the chances of roof-damaging ice dams.



HardieSoffit®
panels

For complete confidence
EVERY DETAIL MATTERS.

HardieSoffit®

Thickness 1/4 in

VENTED SMOOTH & SELECT CEDARMILL®

Length	12 ft	12 ft	8 ft
Width	12 in	16 in	24 in
Prime Pcs/Pallet	200	150	100
ColorPlus Pcs/Pallet	216	156	108

VENTED SMOOTH



Size	12 ft x 12 in	12 ft x 16 in	8 ft x 24 in
------	---------------	---------------	--------------

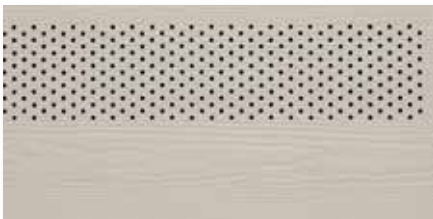
STATEMENT COLLECTION™

DREAM COLLECTION™

PRIME

✓	✓	✓
✓	✓	✓

VENTED SELECT CEDARMILL®



Size	12 ft x 12 in	12 ft x 16 in	8 ft x 24 in
------	---------------	---------------	--------------

STATEMENT COLLECTION™

DREAM COLLECTION™

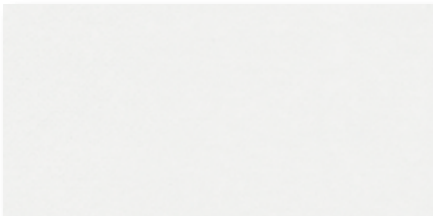
PRIME

✓		
✓	✓	✓
✓	✓	✓

NON-VENTED SMOOTH & SELECT CEDARMILL®

Length	12 ft	12 ft	8 ft	8 ft
Width	12 in	16 in	24 in	48 in
Prime Pcs/Pallet	200	150	100	50
ColorPlus Pcs/Pallet	216	156	108	–

NON-VENTED SMOOTH



Size	12 ft x 12 in	12 ft x 16 in	8 ft x 24 in	8 ft x 48 in
------	---------------	---------------	--------------	--------------

STATEMENT COLLECTION™

DREAM COLLECTION™

PRIME

✓	✓	✓	
✓	✓	✓	✓

NON-VENTED SELECT CEDARMILL®



Size	12 ft x 12 in	12 ft x 16 in	8 ft x 24 in	8 ft x 48 in
------	---------------	---------------	--------------	--------------

STATEMENT COLLECTION™

DREAM COLLECTION™

PRIME

✓			
✓	✓	✓	
✓	✓	✓	✓

BEADED PORCH PANEL



BEADED PORCH PANEL

Thickness	1/4 in
Length	8 ft
Width	48 in
Prime Pcs/Pallet	50

STATEMENT COLLECTION™

DREAM COLLECTION™

PRIME

✓
✓

STATEMENT COLLECTION™

Make your next home stand out with our *Statement Collection™* products. Carefully curated by our design experts specifically for your market, the collection brings together the most popular James Hardie ColorPlus® siding and trim styles, textures, and colors. This stunning selection is locally stocked and designed for simplicity - making it easier than ever to get a beautiful, long-lasting home exterior.

ColorPlus® Technology

Plank, Panel, Shingle and Batten Color Offering



ARCTIC WHITE

COBBLE STONE

NAVAJO BEIGE

KHAKI BROWN

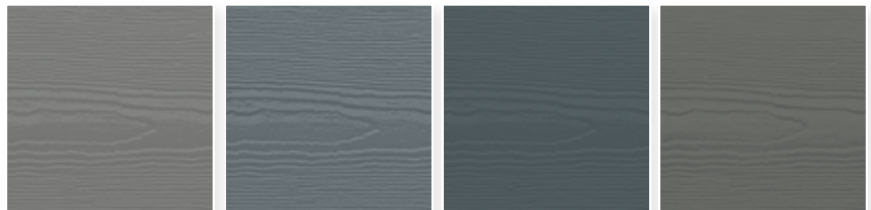


MONTEREY TAUPE

TIMBER BARK

LIGHT MIST

PEARL GRAY



GRAY SLATE

BOOTHBAY BLUE

EVENING BLUE

AGED PEWTER



NIGHT GRAY

IRON GRAY

DEEP OCEAN

Trim Color Offering



ARCTIC
WHITE

COBBLE
STONE

KHAKI
BROWN

MONTEREY
TAUPE

TIMBER
BARK

IRON
GRAY

Soffit Color Offering



ARCTIC
WHITE

COBBLE
STONE

TIMBER
BARK

Selecting a color?
Request a product sample
at jameshardiepros.com/samples

Colors shown are as accurate as printing methods will permit. Please see actual product sample for true color.

HardiePlank®

SELECT CEDARMILL®

Width 8.25 in (7 in exposure)



HardiePanel®

SELECT CEDARMILL®

Size 4 ft x 10 ft



SMOOTH

Size 4 ft x 10 ft



HardieShingle®

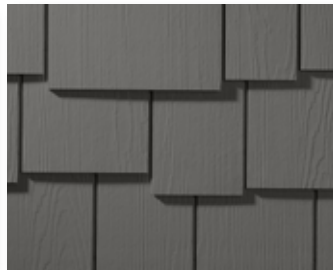
STRAIGHT EDGE PANEL

Height 15.25 in (7 in exposure)



STAGGERED EDGE PANEL

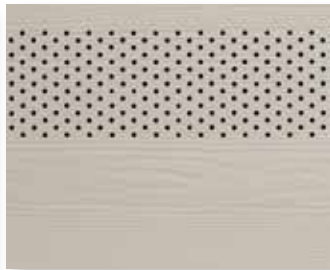
Height 15.25 in (6 in exposure)



HardieSoffit®

VENTED SELECT CEDARMILL®

Size 12 ft x 12 in



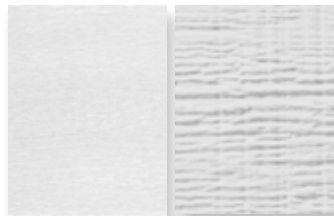
NON-VENTED SELECT CEDARMILL®

Size 12 ft x 12 in



HardieTrim®

4/4 SMOOTH & ROUGHSAWN



Thickness .75 in

Width 7.25 in

Widths in Arctic White only
3.25 in 5.5 in 9.25 in 11.25 in

5/4 SMOOTH

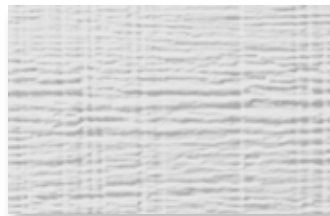


1 in

3.5 in 5.5 in 7.25 in 11.25 in

Widths in Arctic White only
9.25 in

5/4 ROUGHSAWN



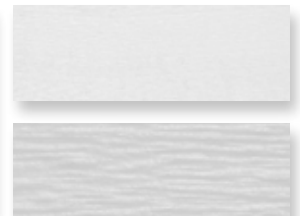
1 in

3.5 in 5.5 in 7.25 in

Widths in Arctic White only
9.25 in 11.25 in

BATTEN BOARDS

4/4 SMOOTH & RUSTIC GRAIN®



.75 in

2.5 in

Get Inspired

SIMPLE LIVING

LIGHT COLORS

Whites and soft pastels are pure, clean, new and bright. Combine with other hues to add interest, personality and contrast. Works well on houses with Colonial Inspiration. A pastel A-frame cottage can look sweet and charming.



Arctic White



Navajo Beige



Cobble Stone



LIVE WITH SOPHISTICATION

NEUTRAL COLORS

Neutral rules the suburbs. These shades are safe, but also sophisticated. When accessorized with black or a darker color, a neutral can look fashionably stylish. Play with textures and use different tones for trim.



Iron Gray



Evening Blue



Night Gray



LIVE YOUR TRUE COLORS

DARK COLORS

Dark grays, blues and greens can feel both intellectual and modern. When used with white trim, they create drama. Works well in old neighborhoods, or urban environments, where there is a mix of old and new.

DREAM COLLECTION™

Looking to further express your sense of style? Look to our *Dream Collection™* products.

- Featuring a color palette of over 700 ColorPlus® Technology finishes
- Made to order in a wide array of James Hardie® siding and trim styles
- Matches elevated design flexibility with the uncompromising performance of our fiber cement products

See what's possible at jameshardiepros.com/dream



Khaki Brown



Monterey Taupe



Timber Bark



HardieWrap®

No exterior cladding can prevent 100% of water intrusion. Your homes should have an additional line of defense. HardieWrap® weather barrier provides a superior balance of water resistance and breathability, keeping the area within the wall drier. This helps prevent moisture accumulation that may lead to mold and mildew growth.

INSTALLATION ADVANTAGES

- Thicker, more durable material for easier, quicker installation
- Superior tear resistance helps prevent water infiltration
- Can be installed with staples in place of cap nails for cost savings
- Provides a higher level of performance, no matter what type of cladding you specify



We've got performance covered
FROM THE INSIDE OUT.



WEATHER BARRIER

Thickness	11 mil			
Length	100 ft	100 ft	150 ft	150 ft
Width	3 ft	9 ft	9 ft	10 ft

PRO-FLASHING

Thickness	20 mil		
Length	75 ft	75 ft	75 ft
Width	4 in	6 in	9 in

FLEX FLASHING

Thickness	60 mil	
Length	75 ft	75 ft
Width	6 in	9 in

SEAM TAPE

Thickness	3.2 mil
Length	164 ft
Width	1-7/8 in



To learn more about our weather barrier's advantages, visit jameshardiepros.com

Install Done Right

Installation Accessories

HARDIEBLADE® SAW BLADES

Manufactured by Diablo, the HardieBlade® saw blade is designed specifically to cut fiber cement products, and is the only saw blade James Hardie recommends. The blade creates clean, precise cuts while helping to reduce the amount of airborne dust produced. Specially designed to outlast other fiber cement saw blades by 3X, outlasting carbide blades by 60X.



PACTOOL® GECKO GAUGE

The PacTool® Gecko Gauge is designed to improve the installation experience, allowing one person to hang HardiePlank® lap siding during installation. Studies suggest the Gecko Gauge can improve the speed of solo installation by 30%.



Finishing Touches

ColorPlus® Technology Accessories

TOUCH-UP KITS

Specially formulated to match ColorPlus Technology finishes, our touch-up kits offer resistance to aging, color change and chalking. Estimated one kit per 4000 sq ft of siding or 1600 sq ft of trim.



COLOR MATCHED CAULK

OSI® QUAD® MAX sealant offers a high performance sealant solution to color match Statement Collection™ products.* About 18-20 linear feet per tube. Refer to packaging for manufacturer's recommendations.

**For matching Dream Collection products, contact your local James Hardie representative.*

Trim Accessories

FLAT TABS

Eliminate face nails and improve the aesthetic of trim applications around windows, doors and band boards.

CORNER TABS

Use corner tabs to eliminate face nail holes that would detract from the finished look of corner trim installations.



Find useful job-site tips in our industry-leading Best Practices Guide. For the latest installation instructions, visit jameshardiepros.com



HardiePlank®
Select Cedarmill®
Timber Bark

HardieTrim®
boards
Arctic White

As unforgettable
AS IT IS UNCOMPROMISING.



See the James Hardie Difference



James Hardie invented fiber cement. Over 8 million homes* later, we continue to set the standard in premium, high-performance exterior cladding. Our products deliver uncompromising durability and finish quality for a beautiful, lower maintenance exterior.

Our unrivaled investment in R&D and constant innovations in product design, manufacturing and distribution allow us to remain steps ahead of the competition. With the support of our employees, partners and exceptional warranties, we're committed to protecting your customers' homes while helping your business grow.

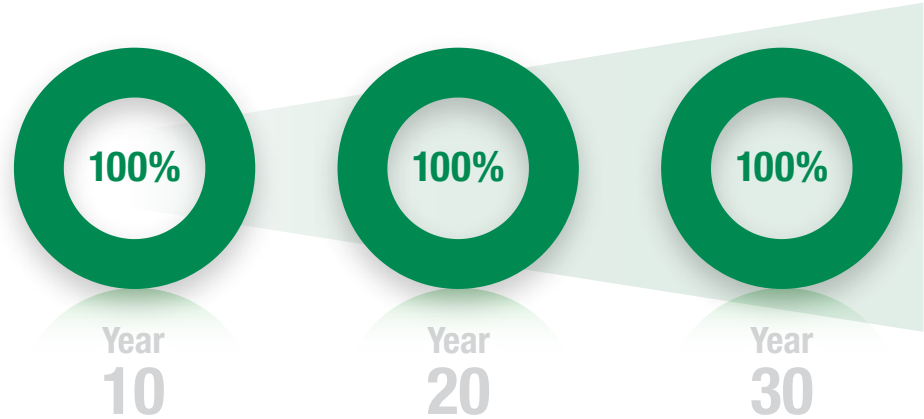
*Estimate based on total James Hardie siding sales through 2016 and average housing unit size.

Warranty

Protect your homes with North America's #1 brand of siding backed by exceptional warranties. Unlike other brands, James Hardie doesn't prorate our siding and trim warranty coverage. We stand behind our siding 100% for 30 years and trim for 15 years.

ColorPlus® Technology finishes come with a 15-year limited warranty.

James Hardie Non-Prorated Siding Substrate Warranty Coverage



Endorsements – a reputation built on trust

For decades, our fiber cement products have been used to create better places to live. Each new home stands as a testament to our uncompromising quality. That proven track record has earned the loyalty of millions of homeowners and the endorsements of trusted authorities across the building industry.



Listed as top building materials and products by **Professional Builder 2018**



Chosen by builders as a **Brand Leader** in **Builder magazine** for over 20 years



HardiePlank® lap siding is backed by the **Good Housekeeping Seal**



HardieTrim®
boards
Arctic White

HardieShingle®
Straight Edge
Pearl Gray

Make every home
AN EXPRESSION OF YOUR CHARACTER.



1.888.542.7343 | jameshardiepros.com

© 2019 James Hardie Building Products Inc. All Rights Reserved. TM, SM, and © denote trademarks or registered trademarks of James Hardie Technology Limited. OSI and QUAD are registered symbols of Henkel Corporation. HS19319 05/19

 **JamesHardie™**
Siding | Trim